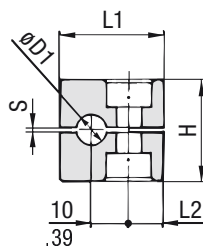
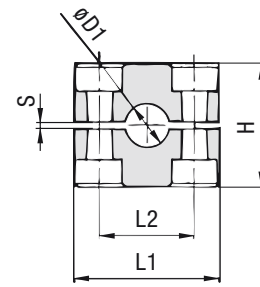


### Clamp Body - Profiled Design

Profiled Inside Surface with Tension Clearance



STAUFF Group 1



STAUFF Group 1A to 8

#### Order Codes

##### Clamp Body

Clamp Body, STAUFF Group 1A

\*1\*06\*PP

\*1\*06A\*PP

One clamp body is consisting of two clamp halves.

\* STAUFF Group

1

\* Exact outside diameter Ø D1 (mm)

06

\* Material code (see below)

PP

#### Standard Materials



**Polypropylene**

Colour: Green  
Material code: **PP**



**Polyamide**

Colour: Black  
Material code: **PA**



**Thermoplastic Elastomer (87 Shore-A)**

Colour: Black  
Material code: **SA**



**Aluminium**

Colour: Self-Colour  
Material code: **AL**

See pages A88 / A89 for material properties and technical information.

#### Special Materials

Please consult STAUFF for further details on fire-proof clamp body materials, tested and approved according to several international fire-protection standards.

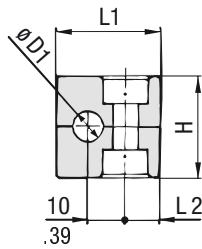
See pages A90 / A91 for material properties and technical information.

#### Product Features

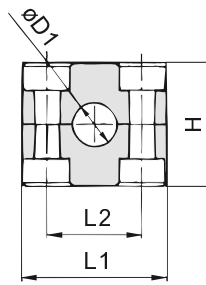
- Proven, tested and trusted product in various markets
- Recommended for the safe installation of rigid pipes and tubes
- Available for all commonly used pipe and tube outside diameters
- Environmental protection due to vibration/noise reducing design
- Excellent weathering resistance, even under extreme conditions

Group	STAUFF	DIN	Outside Diameter		Nominal Bore		Order Codes (2 Clamp Halves)	Dimensions ( <sup>m</sup> / <sub>in</sub> )							
			Pipe / Tube Ø D1 (mm)	(in)	Pipe (in)	Copper Tube ASTM B88 (in)		(** = Material)	L1	L2	H	S min.	Width		
1		0	6				106 **								
			6,4	1/4			106,4 **								
			8	5/16			108 **	28	9,5	27	0,4	30			
			9,5	3/8		1/4	109,5 **	1.10	.37	1.06	.02	1.18			
			10		1/8		110 **								
1A		1	12				112 **								
			6				106A **								
			6,4	1/4			106,4A **								
			8	5/16			108A **	37	20	27	0,4	30			
			9,5	3/8		1/4	109,5A **	1.46	.79	1.06	.02	1.18			
2		2	10		1/8		110A **								
			12				112A **								
			12,7	1/2		3/8	212,7 **								
			13,5		1/4		213,5 **								
			14				214 **	42	26	33	0,6	30			
3		3	15				215 **	1.65	1.02	1.30	.02	1.18			
			16	5/8		1/2	216 **								
			17,2		3/8		217,2 **								
			18				218 **								
			19	3/4			319 **								
4		4	20				320 **								
			21,3		1/2		321,3 **	50	33	36	0,6	30			
			22			3/4	322 **	1.97	1.30	1.42	.02	1.18			
			25				325 **								
			25,4	1			325,4 **								
5		5	26,9		3/4		426,9 **								
			28				428 **								
			28,6			1	428,6 **	59	40	42	0,6	30			
			30				430 **	2.32	1.57	1.65	.02	1.18			
			32				432 **								
6		6	32	1-1/4			532 **								
			33,7		1		533,7 **								
			35			1-1/4	535 **	71	52	58	0,8	30			
			38	1-1/2			538 **	2.80	2.05	2.28	.03	1.18			
			40				540 **								
7		7	41,3		1-1/2		541,3 **								
			42		1-1/4		542 **								
			44,5	1-3/4			644,5 **								
			48,3		1-1/2		648,3 **	86	66	66	0,8	30			
			50,8	2			650,8 **	3.39	2.60	2.60	.03	1.18			
8		8	54			2	654 **								
			57,2	2-1/4			757,2 **								
			60,3		2		760,3 **								
			63,5	2-1/2			763,5 **	121	94	93	0,8	30			
			70	2-3/4			770 **	4.76	3.70	3.66	.03	1.18			
8		8	73		2-1/2 (ANSI B 36-10)		773 **								
			76,1	3	2-1/2 (DIN EN 10220)		776,1 **								
8		8	88,9		3		888,9 **	147	120	118	0,8	30			
			102	4	3-1/2		8102L **	5.79	4.72	4.65	.03	1.18			

Additional outside diameters are available upon request. Please consult STAUFF for further information.



STAUFF Group 1



STAUFF Group 1A to 8

**Clamp Body ▪ Type H**

Smooth Inside Surface without Tension Clearance



Group	STAUFF DIN	Outside Diameter Hose Ø D1		Order Codes (2 Clamp Halves) (*** = Material)	Dimensions (mm / in)			
		(mm)	(in)		L1	L2	H	Width
1	0	6		106 ***				
		6,4	1/4	106,4 ***				
		8	5/16	108 ***	28	9,5	26	30
		9,5	3/8	109,5 ***	1.10	.37	1.02	1.18
		10		110 ***				
		12		112 ***				
1A	1	6		106A ***				
		6,4	1/4	106,4A ***				
		8	5/16	108A ***	37	20	26	30
		9,5	3/8	109,5A ***	1.46	.79	1.02	1.18
		10		110A ***				
		12		112A ***				
2	2	12,7	1/2	212,7 ***				
		13,5		213,5 ***				
		14		214 ***				
		15		215 ***	42	26	32	30
		16	5/8	216 ***	1.65	1.02	1.26	1.18
		17,2		217,2 ***				
		18		218 ***				
3	3	19	3/4	319 ***				
		20		320 ***	50	33	35,5	30
		21,3		321,3 ***	1.97	1.30	1.40	1.18
		22		322 ***				
		25		325 ***				
		25,4	1	325,4 ***				
4	4	26,9		426,9 ***				
		28		428 ***	59	40	41,5	30
		30		430 ***	2.32	1.57	1.63	1.18
		32		432 ***				
5	5	32	1-1/4	532 ***				
		33,7		533,7 ***				
		35		535 ***	71	52	56,5	30
		38	1-1/2	538 ***	2.80	2.05	2.22	1.18
		40		540 ***				
		42		542 ***				
6	6	44,5	1-3/4	644,5 ***				
		48,3		648,3 ***	86	66	64,5	30
		50,8	2	650,8 ***	3.39	2.60	2.54	1.18
		54		654 ***				
7	7	57,2	2-1/4	757,2 ***				
		60,3		760,3 ***				
		63,5	2-1/2	763,5 ***	121	94	92	30
		70	2-3/4	770 ***	4.76	3.70	3.62	1.18
		73		773 ***				
		76,1	3	776,1 ***				
8	8	88,9		888,9 ***	147	120	116	30
		102	4	8102L ***	5.79	4.72	4.57	1.18

Additional outside diameters are available upon request. Please consult STAUFF for further information.

**Order Codes**
**Clamp Body** \*1\*06\*PPH  
**Clamp Body, STAUFF Group 1A** \*1\*06A\*PPH

One clamp body is consisting of two clamp halves.

- \* STAUFF Group 1
- \* Exact outside diameter Ø D1 (mm) 06
- \* Material code (see below) PPH

**Standard Materials**

**Polypropylene**  
 Colour: Green  
 Material code: **PPH**

**Polyamide**  
 Colour: Black  
 Material code: **PAH**

**Thermoplastic Elastomer (87 Shore-A)**  
 Colour: Black  
 Material code: **SAH**

See pages A88 / A89 for material properties and technical information.

**Special Materials**

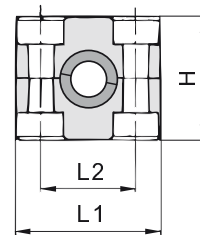
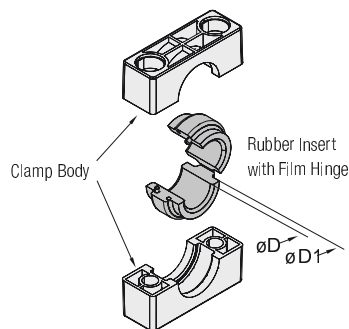
Please consult STAUFF for further details on fire-proof clamp body materials, tested and approved according to several international fire-protection standards.

See pages A90 / A91 for material properties and technical information.

**Product Features**

- Proven, tested and trusted product in various markets
- Recommended for the safe installation of hoses and cables
- Chamfered edges avoid damaging of the hoses and cables
- Available for all commonly used hose and cable outside diameters
- Excellent weathering resistance, even under extreme conditions

## Clamp Body with Rubber Insert Type RI



### Order Codes

#### Clamp Assembly

**\*4\*06\*PPR**

One assembly is consisting of one clamp body and one insert.

- \* STAUFF Group **4**
- \* Exact outside diameter  $\varnothing D$  (mm) **06**
- \* Material code (see below) **PPR**

#### Clamp Body

**\*4\*PPR**

One clamp body is consisting of two clamp halves.

- \* STAUFF Group **4**
- \* Material code (see below) **PPR**

#### Rubber Insert

**\*RI\*06\*(4+4S)**

- \* Rubber Insert **RI**
- \* Exact outside diameter  $\varnothing D$  (mm) **06**
- \* STAUFF Group 4 (Standard) and 4S (Heavy) **(4+4S)**
- 6 (Standard) and 5S (Heavy) **(6+5S)**

### Standard Materials



**Polypropylene**  
Colour: Black  
Material code: **PPR**



**Polyamide**  
Colour: Black  
Material code: **PAR**



Rubber Insert  
**Thermoplastic Elastomer** (73 Shore-A)  
Colour: Black

See pages A88 / A89 for material properties and technical information.

### Special Materials

Please consult STAUFF for further details on fire-proof clamp body materials, tested and approved according to several international fire-protection standards.

See pages A90 / A91 for material properties and technical information.

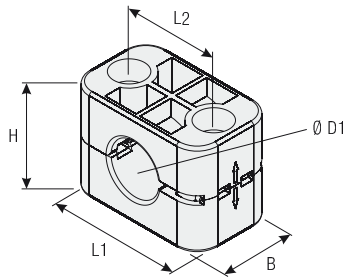
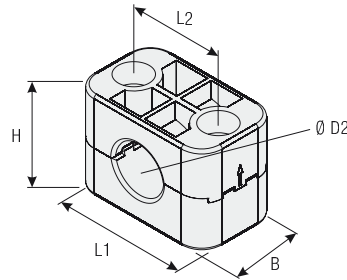
### Product Features

- Proven, tested and trusted product in various markets
- Either for the extra vibration/noise reducing installation of pipes and tubes or the extra gentle installation of hoses and cables
- Available for all commonly used outside diameters
- Excellent weathering resistance, even under extreme conditions

Group	STAUFF	DIN	Outside Diameter Pipe / Tube / Hose		Order Codes (**R = Clamp Body Material)			Dimensions ( <sup>mm</sup> / <sub>in</sub> )				
			$\varnothing D$ (mm)	(in)	Clamp Assembly (Clamp Body + Rubber Insert)	Clamp Body (2 Clamp Halves)	Rubber Insert *	$\varnothing D1$	L1	L2	H	Width
4	4	4	6		406 **R	4 **R	RI 06 (4+4S)	25 .98	59 2.32	40 1.57	41,2 1.62	30 1.18
			8	5/16	408 **R		RI 08 (4+4S)					
			10		410 **R		RI 10 (4+4S)					
			12		412 **R		RI 12 (4+4S)					
			12,7	1/2	412,7 **R		RI 12,7 (4+4S)					
			14		414 **R		RI 14 (4+4S)					
			15		415 **R		RI 15 (4+4S)					
			16	5/8	416 **R		RI 16 (4+4S)					
			17,2		417,2 **R		RI 17,2 (4+4S)					
			18		418 **R		RI 18 (4+4S)					
			19	3/4	419 **R		RI 19 (4+4S)					
			6	6	6		20					
21,3		621,3 **R				RI 21,3 (6+5S)						
22	7/8	622 **R				RI 22 (6+5S)						
25		625 **R				RI 25 (6+5S)						
26,9		626,9 **R				RI 26,9 (6+5S)						
28		628 **R				RI 28 (6+5S)						
30		630 **R				RI 30 (6+5S)						
32	1-1/4	632 **R				RI 32 (6+5S)						

\* Rubber Inserts for Standard Series clamp bodies, STAUFF Group 4 also fit into Heavy Series clamp bodies, STAUFF Group 4S.  
Rubber Inserts for Standard Series clamp bodies, STAUFF Group 6 also fit into Heavy Series clamp bodies, STAUFF Group 5S.

Additional outside diameters are available upon request. Please consult STAUFF for further information.


**For Use with Regular Hose**

**For Use with Compact Hose**  
(Upper Clamp Half rotated by 180°)

**Clamp Body - Compact Design**  
Type CC

Group	STAUFF	DIN	Outside Diameter Regular Hose		Outside Diameter Compact Hose		Order Codes (2 Clamp Halves)	Dimensions (mm/in)				
			Ø D1 (mm)	(in)	Ø D2 (mm)	(in)		(*** = Material)	L1	L2	H	
3	3	19	.75	17,4	.69	319 ***-CC	50 1.97	33 1.30	Regular Hose	Compact Hose	30 1.18	
		22,2	.87	20,6	.81	322,2 ***-CC			35,5 1.40	34 1.34		
		25,4	1.00	23,7	.93	325,4 ***-CC						

**Order Codes**
**Clamp Body**      **\*3\*19\*PPH-CC**

One clamp body is consisting of two clamp halves.

- \* STAUFF Group 3
- \* Outside diameter Ø D1 (mm) of regular hose 19
- \* Material code (see below) PPH-CC

Additional outside diameters are available upon request. Please consult STAUFF for further information.

**Product Features**

- Only one clamp body required for two different hose diameters (compact hose + regular hose)
- Rotate upper clamp half by 180° and use clamp body to fasten compact hoses instead of regular hoses
- Available for three different combinations of outside hose diameters
- Outer dimensions according to DIN 3015, Part 1
- Effective cost reduction due to lower inventories

**Special Materials**

Please consult STAUFF for further details on fire-proof clamp body materials, tested and approved according to several international fire-protection standards.

See pages A90 / A91 for material properties and technical information.

**Standard Materials**

**Polypropylene**  
 Colour: Black  
 Material code: **PPH-CC**

**Polyamide**  
 Colour: Black  
 Material code: **PAH-CC**

See pages A88 / A89 for material properties and technical information.

**Clamp Body - Rectangular Design**  
Type VK

**Clamp Body - Oval Design**

**Order Codes**

One clamp body is consisting of two clamp halves.

**Clamp Body**      **540-40 PP-VK**  
 Rectangular design with a rectangular of 40 mm x 40 mm / 1.57 in x 1.57 in

**Clamp Body**      **540-36 PP-VK**  
 Rectangular design with a rectangular of 40 mm x 36 mm / 1.57 in x 1.42 in

Please replace PP by PA to order a clamp body made of Polyamide instead of Polypropylene.

**Order Codes**

One clamp body is consisting of two clamp halves.

**Clamp Body**      **620-50 PP**  
 Oval design with a diameter between 20 mm / .79 in and 50 mm / 1.97 in

Please replace PP by PA to order a clamp body made of Polyamide instead of Polypropylene.

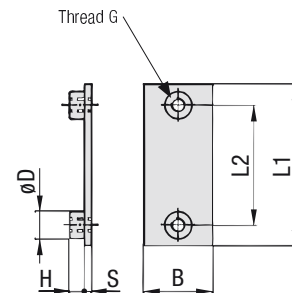
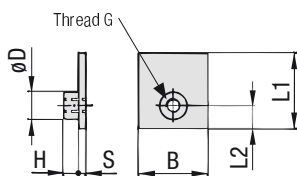
**Product Features**

- Outer dimensions of clamp body according to Standard Series, STAUFF Group 5
- For proximity switches according to DIN EN 60947-5-2 or similar, rectangular construction, with a square of 40 mm x 40 mm / 1.57 in x 1.57 in or 40 mm x 36 mm / 1.57 in x 1.42 in
- For proximity switches according to DIN EN 60947-5-2 or similar, round construction, please use Standard Series clamp body, STAUFF Group 4, with the diameter required (e.g. 430 PP)
- Use with Hexagon Rail Nut SM and Mounting Rail TS to provide axial and horizontal position adjustment when loosening the bolts

**Product Features**

- Outer dimensions of clamp body according to Standard Series, STAUFF Group 6
- For electric cables with diameters between 20 mm / .79 in and 50 mm / 1.97 in
- For electric cables with diameters between 40 mm / 1.57 in and 72 mm / 2.83 in, please use Heavy Series clamp body, types 6040-72 PP and 6040-72 PA
- Recommended to use with Hexagon Head Bolts AS and Cover Plate DP, Socket Cap Screw IS (with washer) or Slotted Head Screw LI (with washer)
- For varying cable diameters, only the bolt lengths need to be varied

### Single Weld Plate Type SP



STAUFF Group 1

STAUFF Group 1A to 8

#### Order Codes

#### Weld Plate

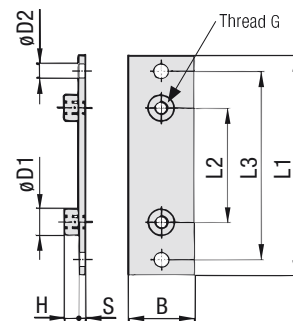
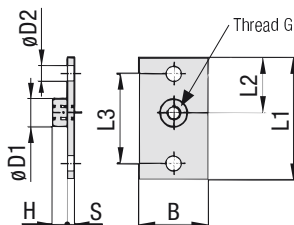
**\*SP\*1\*M\*W2**

- \* Single Weld Plate **SP**
- \* STAUFF Group **1**
- \* Thread code   Metric ISO thread **M**  
                    Unified coarse (UNC) thread **U**
- \* Material code   Carbon Steel, untreated **W1**  
                    Carbon Steel, phosphated **W2**  
                    Carbon Steel, zinc/nickel-plated **W3**  
  
                    Stainless Steel V2A **W4**  
                    1.4301 / 1.4305 (AISI 304 / 303)  
                    Stainless Steel V4A **W5**  
                    1.4401 / 1.4571 (AISI 316 / 316 Ti)

Group STAUFF	DIN	Dimensions (mm/in)							Order Codes (Standard Options)
		Thread G	L1	L2	B	S	H	ØD	
1	0	M6	31,5	10	30	3	6,5	12	SP 1 M W2
		1/4-20 UNC	1.24	0.39	1.18	.12	.26	.47	SP 1 U W2
1A	1	M6	36	20	30	3	6,5	12	SP 1A M W2
		1/4-20 UNC	1.42	0.79	1.18	.12	.26	.47	SP 1A U W2
2	2	M6	42	26	30	3	6,5	12	SP 2 M W2
		1/4-20 UNC	1.65	1.02	1.18	.12	.26	.47	SP 2 U W2
3	3	M6	50	33	30	3	6,5	12	SP 3 M W2
		1/4-20 UNC	1.97	1.30	1.18	.12	.26	.47	SP 3 U W2
4	4	M6	60	40	30	3	6,5	12	SP 4 M W2
		1/4-20 UNC	2.36	1.57	1.18	.12	.26	.47	SP 4 U W2
5	5	M6	71	52	30	3	6,5	12	SP 5 M W2
		1/4-20 UNC	2.80	2.05	1.18	.12	.26	.47	SP 5 U W2
6	6	M6	88	66	30	3	6,5	12	SP 6 M W2
		1/4-20 UNC	3.46	2.60	1.18	.12	.26	.47	SP 6 U W2
7	7	M6	122	94	30	5	6,5	12	SP 7 M W2
		1/4-20 UNC	4.80	3.70	1.18	.20	.26	.47	SP 7 U W2
8	8	M6	148	120	30	5	6,5	12	SP 8 M W2
		1/4-20 UNC	5.83	4.72	1.18	.20	.26	.47	SP 8 U W2

All threaded parts are available with Metric ISO thread or unified coarse (UNC) thread according to dimension table. Alternative materials and surface finishings are available upon request. Consult STAUFF for further information.

### Elongated Weld Plate Type SPV



STAUFF Group 1

STAUFF Group 1A to 8

#### Order Codes

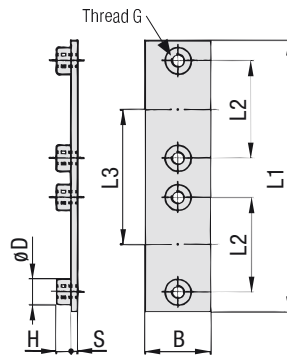
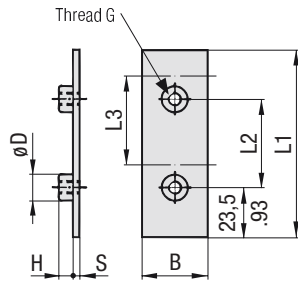
#### Weld Plate

**\*SPV\*1\*M\*W2**

- \* Elongated Weld Plate **SPV**
- \* STAUFF Group **1**
- \* Thread code   Metric ISO thread **M**  
                    Unified coarse (UNC) thread **U**
- \* Material code   Carbon Steel, untreated **W1**  
                    Carbon Steel, phosphated **W2**  
                    Carbon Steel, zinc/nickel-plated **W3**  
  
                    Stainless Steel V2A **W4**  
                    1.4301 / 1.4305 (AISI 304 / 303)  
                    Stainless Steel V4A **W5**  
                    1.4401 / 1.4571 (AISI 316 / 316 Ti)

Group STAUFF	DIN	Dimensions (mm/in)								Order Codes (Standard Options)	
		Thread G	L1	L2	L3	B	S	H	ØD1		ØD2
1	0	M6	58	24,5	44	30	3	6,5	12	6,5	SPV 1 M W2
		1/4-20 UNC	2.28	.96	1.73	1.18	.12	.26	.47	.26	SPV 1 U W2
1A	1	M6	64	20	50	30	3	6,5	12	6,5	SPV 1A M W2
		1/4-20 UNC	2.52	.79	1.97	1.18	.12	.26	.47	.26	SPV 1A U W2
2	2	M6	70	26	56	30	3	6,5	12	6,5	SPV 2 M W2
		1/4-20 UNC	2.76	1.02	2.20	1.18	.12	.26	.47	.26	SPV 2 U W2
3	3	M6	78	33	64	30	3	6,5	12	6,5	SPV 3 M W2
		1/4-20 UNC	3.07	1.30	2.52	1.18	.12	.26	.47	.26	SPV 3 U W2
4	4	M6	87	40	73	30	3	6,5	12	6,5	SPV 4 M W2
		1/4-20 UNC	3.43	1.57	2.87	1.18	.12	.26	.47	.26	SPV 4 U W2
5	5	M6	100	52	86	30	3	6,5	12	6,5	SPV 5 M W2
		1/4-20 UNC	3.94	2.05	3.39	1.18	.12	.26	.47	.26	SPV 5 U W2
6	6	M6	115	66	100	30	3	6,5	12	6,5	SPV 6 M W2
		1/4-20 UNC	4.53	2.60	3.94	1.18	.12	.26	.47	.26	SPV 6 U W2
7	7	M6	150	94	136	30	5	6,5	12	6,5	SPV 7 M W2
		1/4-20 UNC	5.91	3.70	5.35	1.18	.20	.26	.47	.26	SPV 7 U W2
8	8	M6	178	120	162	30	5	6,5	12	6,5	SPV 8 M W2
		1/4-20 UNC	7.01	4.72	6.38	1.18	.20	.26	.47	.26	SPV 8 U W2

All threaded parts are available with Metric ISO thread or unified coarse (UNC) thread according to dimension table. Alternative materials and surface finishings are available upon request. Consult STAUFF for further information.


**Twin Weld Plate  
Type DSP**

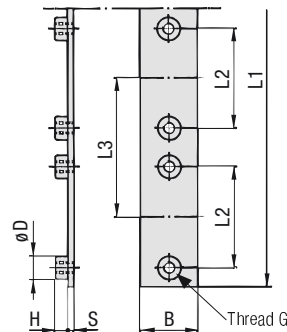
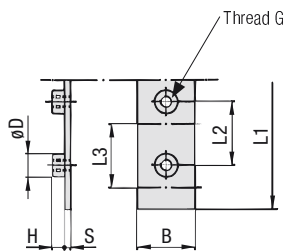
**STAUFF Group 1**
**STAUFF Group 1A to 8**

Group STAUFF	DIN	Dimensions (mm/in)								Order Codes (Standard Options)
		Thread G	L1	L2	L3	B	S	H	ØD	
1	0	M6	87	40	40	30	3	6.5	12	DSP 1/40 M W2
		1/4-20 UNC	3.43	1.57	1.57	1.18	.12	.26	.47	DSP 1/40 U W2
1A	1	M6	77	20	37	30	3	6.5	12	DSP 1A/37 M W2
		1/4-20 UNC	3.03	.79	1.46	1.18	.12	.26	.47	DSP 1A/37 U W2
2	2	M6	86	26	44	30	3	6.5	12	DSP 2/44 M W2
		1/4-20 UNC	3.39	1.02	1.73	1.18	.12	.26	.47	DSP 2/44 U W2
3	3	M6	102	33	52	30	3	6.5	12	DSP 3/52 M W2
		1/4-20 UNC	4.02	1.30	2.05	1.18	.12	.26	.47	DSP 3/52 U W2
4	4	M6	120	40	60	30	3	6.5	12	DSP 4/60 M W2
		1/4-20 UNC	4.72	1.57	2.36	1.18	.12	.26	.47	DSP 4/60 U W2
5	5	M6	145	52	75	30	3	6.5	12	DSP 5/75 M W2
		1/4-20 UNC	5.71	2.05	2.95	1.18	.12	.26	.47	DSP 5/75 U W2
6	6	M6	178	66	90	30	3	6.5	12	DSP 6/90 M W2
		1/4-20 UNC	7.01	2.60	3.54	1.18	.12	.26	.47	DSP 6/90 U W2

All threaded parts are available with Metric ISO thread or unified coarse (UNC) thread according to dimension table. Alternative materials and surface finishings are available upon request. Consult STAUFF for further information.

**Order Codes**
**Weld Plate**
**\*DSP\*1/40\*M\*W2**

* Twin Weld Plate		DSP
* STAUFF Group		1
* Pipe center spacing L3 (mm)		40
* Thread code	Metric ISO thread	M
	Unified coarse (UNC) thread	U
* Material code	Carbon Steel, untreated	W1
	Carbon Steel, phosphated	W2
	Carbon Steel, zinc/nickel-plated	W3
	Stainless Steel V2A	W4
	1.4301 / 1.4305 (AISI 304 / 303)	W4
	Stainless Steel V4A	W5
	1.4401 / 1.4571 (AISI 316 / 316 Ti)	W5


**Group Weld Plate  
Type RAP**

**STAUFF Group 1**
**STAUFF Group 1A to 8**

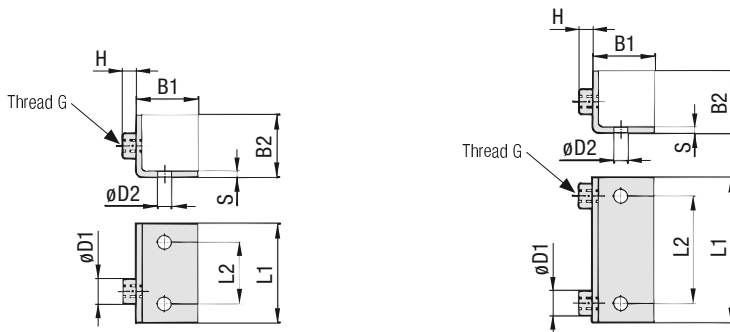
Group STAUFF	DIN	Dimensions (mm/in)								Order Codes (Standard Options)
		Thread G	L1	L2	L3	B	S	H	ØD	
1	0	M6	314	31	31	30	4	6.5	12	RAP 1/31/10 M W1
		1/4-20 UNC	12.36	1.22	1.22	1.18	.16	.26	.47	RAP 1/31/10 U W1
1A	1	M6	373	20	37	30	4	6.5	12	RAP 1A/37/10 M W1
		1/4-20 UNC	14.69	.79	1.46	1.18	.16	.26	.47	RAP 1A/37/10 U W1
2	2	M6	442	26	44	30	4	6.5	12	RAP 2/44/10 M W1
		1/4-20 UNC	17.40	1.02	1.73	1.18	.16	.26	.47	RAP 2/44/10 U W1
3	3	M6	521	33	52	30	4	6.5	12	RAP 3/52/10 M W1
		1/4-20 UNC	20.51	1.30	2.05	1.18	.16	.26	.47	RAP 3/52/10 U W1
4	4	M6	300	40	60	30	4	6.5	12	RAP 4/60/5 M W1
		1/4-20 UNC	11.81	1.57	2.36	1.18	.16	.26	.47	RAP 4/60/5 U W1
5	5	M6	378	52	75	30	4	6.5	12	RAP 5/75/5 M W1
		1/4-20 UNC	14.88	2.05	2.95	1.18	.16	.26	.47	RAP 5/75/5 U W1
6	6	M6	450	66	90	30	4	6.5	12	RAP 6/90/5 M W1
		1/4-20 UNC	17.72	2.60	3.54	1.18	.16	.26	.47	RAP 6/90/5 U W1

All threaded parts are available with Metric ISO thread or unified coarse (UNC) thread according to dimension table. Alternative materials and surface finishings are available upon request. Consult STAUFF for further information.

**Order Codes**
**Weld Plate**
**\*RAP\*1/31/10\*M\*W1**

* Group Weld Plate		RAP
* STAUFF Group		1
* Pipe center spacing L3 (mm)		31
* Number of clamps		10
* Thread code	Metric ISO thread	M
	Unified coarse (UNC) thread	U
* Material code	Carbon Steel, untreated	W1
	Carbon Steel, phosphated	W2
	Carbon Steel, zinc/nickel-plated	W3
	Stainless Steel V2A	W4
	1.4301 / 1.4305 (AISI 304 / 303)	W4
	Stainless Steel V4A	W5
	1.4401 / 1.4571 (AISI 316 / 316 Ti)	W5

**Angled Weld Plate**  
Type WSP



STAUFF Group 1

STAUFF Group 1A to 6

**Order Codes**

**Weld Plate**

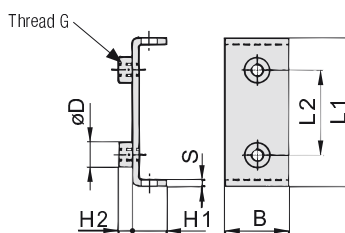
**\*WSP\*1\*M\*W1**

- \* Angled Weld Plate WSP
- \* STAUFF Group 1
- \* Thread code    Metric ISO thread M  
                          Unified coarse (UNC) thread U
- \* Material code    Carbon Steel, untreated W1  
                          Carbon Steel, zinc/nickel-plated W3  
  
                          Stainless Steel V2A W4  
                          1.4301 / 1.4305 (AISI 304 / 303) W4  
                          Stainless Steel V4A W5  
                          1.4401 / 1.4571 (AISI 316 / 316 Ti) W5

Group STAUFF	DIN	Dimensions (mm/in)								Order Codes (Standard Options)	
		Thread G	L1	L2	B1	B2	S	H	ØD1		ØD2
1	0	M6	30	14	30	30	3	6,5	12	6,5	WSP 1 M W1
		1/4-20 UNC	1.18	.55	1.18	1.18	.12	.26	.47	.26	WSP 1 U W1
1A	1	M6	32	20	30	30	3	6,5	12	6,5	WSP 1A M W1
		1/4-20 UNC	1.26	.79	1.18	1.18	.12	.26	.47	.26	WSP 1A U W1
2	2	M6	42	26	30	30	3	6,5	12	6,5	WSP 2 M W1
		1/4-20 UNC	1.65	1.02	1.18	1.18	.12	.26	.47	.26	WSP 2 U W1
3	3	M6	50	33	30	30	3	6,5	12	6,5	WSP 3 M W1
		1/4-20 UNC	1.97	1.30	1.18	1.18	.12	.26	.47	.26	WSP 3 U W1
4	4	M6	60	40	30	30	3	6,5	12	6,5	WSP 4 M W1
		1/4-20 UNC	2.36	1.57	1.18	1.18	.12	.26	.47	.26	WSP 4 U W1
5	5	M6	70	52	30	30	3	6,5	12	6,5	WSP 5 M W1
		1/4-20 UNC	2.76	2.05	1.18	1.18	.12	.26	.47	.26	WSP 5 U W1
6	6	M6	88	66	30	30	3	6,5	12	6,5	WSP 6 M W1
		1/4-20 UNC	3.46	2.60	1.18	1.18	.12	.26	.47	.26	WSP 6 U W1

All threaded parts are available with Metric ISO thread or unified coarse (UNC) thread according to dimension table. Alternative materials and surface finishings are available upon request. Consult STAUFF for further information.

**Bridge Weld Plate**  
Type BSP



**Order Codes**

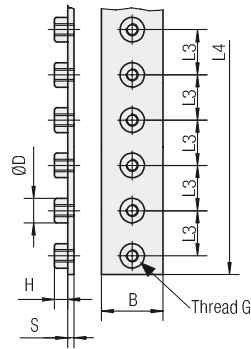
**Weld Plate**

**\*BSP\*1A\*M\*W1**

- \* Bridge Weld Plate BSP
- \* STAUFF Group 1A
- \* Thread code    Metric ISO thread M  
                          Unified coarse (UNC) thread U
- \* Material code    Carbon Steel, untreated W1  
                          Carbon Steel, phosphated W2  
                          Carbon Steel, zinc/nickel-plated W3  
  
                          Stainless Steel V2A W4  
                          1.4301 / 1.4305 (AISI 304 / 303) W4  
                          Stainless Steel V4A W5  
                          1.4401 / 1.4571 (AISI 316 / 316 Ti) W5

Group STAUFF	DIN	Dimensions (mm/in)								Order Codes (Standard Options)
		Thread G	L1	L2	B	S	H1	H2	ØD	
1A	1	M6	48	20	30	3	13	6,5	12	BSP 1A M W1
		1/4-20 UNC	1.89	.79	1.18	1.18	.12	.52	.26	.47
2	2	M6	54	26	30	3	13	6,5	12	BSP 2 M W1
		1/4-20 UNC	2.13	1.02	1.18	1.18	.12	.52	.26	.47
3	3	M6	62	33	30	3	13	6,5	12	BSP 3 M W1
		1/4-20 UNC	2.44	1.30	1.18	1.18	.12	.52	.26	.47
4	4	M6	71	40	30	3	13	6,5	12	BSP 4 M W1
		1/4-20 UNC	2.80	1.57	1.18	1.18	.12	.52	.26	.47
5	5	M6	85	52	30	3	13	6,5	12	BSP 5 M W1
		1/4-20 UNC	3.35	2.05	1.18	1.18	.12	.52	.26	.47
6	6	M6	98	66	30	3	13	6,5	12	BSP 6 M W1
		1/4-20 UNC	3.86	2.60	1.18	1.18	.12	.52	.26	.47

All threaded parts are available with Metric ISO thread or unified coarse (UNC) thread according to dimension table. Alternative materials and surface finishings are available upon request. Consult STAUFF for further information.



Number of Weld Nuts	Dimensions (mm/in)							Order Codes (Standard Options)
	Thread G	L3	L4	B	S	H	ØD	
6	M6	26	156	30	4	6,5	12	RAP-MGR 25/156 M W1
	1/4-20 UNC	1.02	6.14	1.18	.16	.26	.47	RAP-MGR 25/156 U W1
9	M6	26	234	30	4	6,5	12	RAP-MGR 25/234 M W1
	1/4-20 UNC	1.02	9.21	1.18	.16	.26	.47	RAP-MGR 25/234 U W1
12	M6	26	312	30	4	6,5	12	RAP-MGR 25/312 M W1
	1/4-20 UNC	1.02	12.28	1.18	.16	.26	.47	RAP-MGR 25/312 U W1
15	M6	26	390	30	4	6,5	12	RAP-MGR 25/390 M W1
	1/4-20 UNC	1.02	15.35	1.18	.16	.26	.47	RAP-MGR 25/390 U W1
20	M6	26	520	30	4	6,5	12	RAP-MGR 25/520 M W1
	1/4-20 UNC	1.02	20.47	1.18	.16	.26	.47	RAP-MGR 25/520 U W1
27	M6	26	700	30	4	6,5	12	RAP-MGR 25/700 M W1
	1/4-20 UNC	1.02	27.55	1.18	.16	.26	.47	RAP-MGR 25/700 U W1

Cover a diameter range from 8 mm (.31 in) to 42 mm (1.65 in) with only one Group Weld Plate!

Multi-Group Weld Plates, type RAP-MGR are designed to be used in combination with Standard Series clamp bodies, STAUFF Group 2 (regular types, see pages A6 ff.) covering a diameter range from 8 mm / .31 in to 18 mm / .71 in, as well as Standard Series clamp bodies, STAUFF Group 5 (type MGR, see below) covering a diameter range from 20 mm / .79 in to 42 mm / 1.65 in. Thus, all Standard Series metal parts of these groups can be used.

All threaded parts are available with Metric ISO thread or unified coarse (UNC) thread according to dimension table. Alternative materials and surface finishings are available upon request. Consult STAUFF for further information.

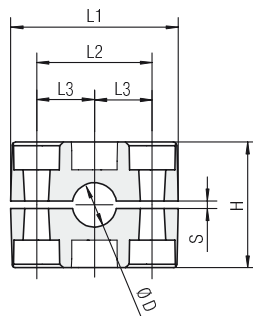
## Multi-Group Weld Plate Type RAP-MGR


 STAUFF  
Clamps  
A

### Order Codes

#### Weld Plate \*RAP-MGR\*25/156\*M\*W1

* Multi Group Weld Plate	RAP-MGR
* Suitable for STAUFF Group 2 and 5	25
* Length L4 (mm)	156 (with 6 weld nuts) 156 234 (with 9 weld nuts) 234 312 (with 12 weld nuts) 312 390 (with 15 weld nuts) 390 520 (with 20 weld nuts) 520 700 (with 27 weld nuts) 700
* Thread code	Metric ISO thread M Unified coarse (UNC) thread U
* Material code	Carbon Steel, untreated W1 Carbon Steel, phosphated W2 Carbon Steel, zinc/nickel-plated W3 Stainless Steel V2A W4 1.4301 / 1.4305 (AISI 304 / 303) Stainless Steel V4A W5 1.4401 / 1.4571 (AISI 316 / 316 Ti)

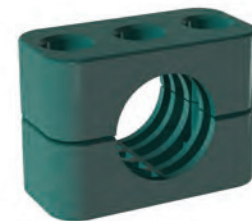


STAUFF Group 5

Group	Outside Diameter Pipe / Tube Ø D (mm) (in)	Nominal Bore Pipe (in)	Copper Tube ASTM B88 (in)	Order Codes (2 Clamp Halves) (** = Material)	Dimensions (mm/in)						
					L1	L2	L3	H	S min.	Width	
5	20			520 **-MGR							
	21,3		1/2	521,3 **-MGR							
	22		3/4	522 **-MGR							
	23			523 **-MGR							
	25			525 **-MGR							
	26,9		3/4	526,9 **-MGR							
	28			528 **-MGR	71	52	26	58	0,8	30	
	30			530 **-MGR	2.80	2.05	1.02	2.28	.03	1.18	
	32	1-1/4		532 **-MGR							
	33,7		1	533,7 **-MGR							
	35			535 **-MGR							
	38	1-1/2		538 **-MGR							
	40			540 **-MGR							
	42		1-1/4	542 **-MGR							

Additional outside diameters are available upon request. Please consult STAUFF for further information.

## Clamp Body for Multi-Group Weld Plate Type MGR



### Order Codes

#### Clamp Body \*5\*20\*PP-MGR

One clamp body is consisting of two clamp halves.

* STAUFF Group	5
* Exact outside diameter Ø D1 (mm)	20
* Material code (see below)	PP-MGR

### Standard Materials



**Polypropylene**  
Colour: Green  
Material code: PP-MGR



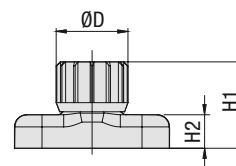
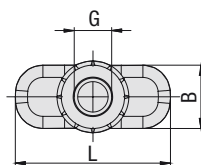
**Polyamide**  
Colour: Black  
Material code: PA-MGR

See pages A88 / A89 for properties and technical information.



### Hexagon Rail Nut

Type SM / SMG (for Use with Mounting Rail TS)



#### Order Codes

**Hexagon Rail Nut \*SM\*1-8/1D\*M\*W3**

\* Hexagon Rail Nut

Carbon Steel **SM**  
Stainless Steel **SMG**

\* STAUFF Group 1 to 8 (DIN Group 0 to 8) **1-8/1D**

\* Thread code Metric ISO thread **M**  
Unified coarse (UNC) thread **U**

\* Material code Carbon Steel, zinc/nickel-plated **W3**  
Stainless Steel V2A **W4**  
1.4301 / 1.4305 (AISI 304 / 303)  
Stainless Steel V4A **W5**  
1.4401 / 1.4571 (AISI 316 / 316 Ti)

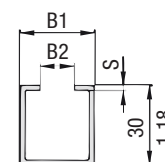
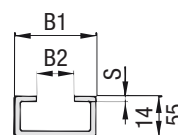
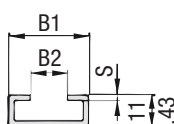
Group STAUFF	DIN	Dimensions (mm/in)						Order Codes (Standard Options)
		Thread G	L	B	H1	H2	ØD	
1	0							
1A	1							
2	2							
3	3							
4	4	M6	25,5	10,4	14,2	5,5	12	<b>SM 1-8/1D M W3</b> <b>SM 1-8/1D U W3</b>
		1/4-20 UNC	1.00	.41	.56	.22	.47	
5	5							
6	6							
7	7							
8	8							

Hexagon Rail Nuts, type SM 1-8/1D are also suitable for Twin Series, STAUFF Group 1D.

All threaded parts are available with Metric ISO thread or unified coarse (UNC) thread according to dimension table. Alternative materials and surface finishings are available upon request. Consult STAUFF for further information.

### Mounting Rail

Type TS (for Use with Hexagon Rail Nut SM / SMG)



Mounting Rail TS 11

Mounting Rail TS 14

Mounting Rail TS 30

#### Order Codes

**Mounting Rail \*TS\*11\*-1\*W1**

\* Mounting Rail

**TS**

\* Height of rail 11 mm / .43 in **11**  
14 mm / .55 in **14**  
30 mm / 1.18 in **30**

\* Length of rail 1 m / 3.28 ft **-1M**  
2 m / 6.56 ft **-2M**

Alternative lengths available upon request. Consult STAUFF for further information.

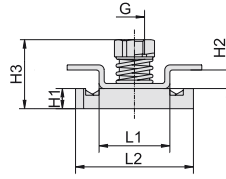
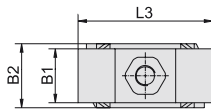
\* Material code Carbon Steel, untreated **W1**  
Carbon Steel, zinc/nickel-plated **W3**  
Stainless Steel V2A **W4**  
1.4301 / 1.4305 (AISI 304 / 303)  
Stainless Steel V4A **W5**  
1.4401 / 1.4571 (AISI 316 / 316 Ti)

Group STAUFF	DIN	Dimensions (mm/in)			Order Codes (Standard Options)	
		B1	B2	S	Length of Rail: 1 m / 3.28 ft	Length of Rail: 2 m / 6.56 ft
1	0					
1A	1				Height 11 mm / .43 in <b>TS 11-1M W1</b>	Height 11 mm / .43 in <b>TS 11-2M W1</b>
2	2					
3	3					
4	4	28	11	2	Height 14 mm / .55 in <b>TS 14-1M W1</b>	Height 14 mm / .55 in <b>TS 14-2M W1</b>
		1.10	.43	.08		
5	5					
6	6					
7	7				Height 30 mm / 1.18 in <b>TS 30-1M W1</b>	Height 30 mm / 1.18 in <b>TS 30-2M W1</b>
8	8					

Mounting Rails, type TS 11/14/30 are suitable for all Standard Series and Twin Series group sizes.

Alternative materials and surface finishings are available upon request. Consult STAUFF for further information.

## Channel Rail Adaptor (for Use with Various Channel Rails) Type CRA



Group STAUFF	DIN	Dimensions (mm/in)									Order Codes (Standard Options)
		Thread G	L1	L2	L3	B1	B2	H1	H2	H3	
1	0										
1A	1										
2	2										
3	3										
4	4	M6	21	35	40	16	19	6	5,5	20,5	CRA 1-8/1D M W3 CRA 1-8/1D U W3
		1/4-20 UNC	.83	1.38	1.57	.63	.75	.24	.22	.81	
5	5										
6	6										
7	7										
8	8										

### Order Codes

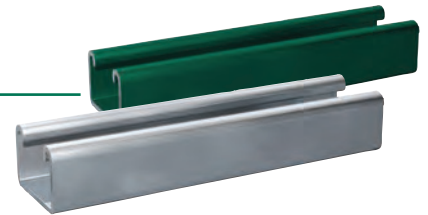
#### Adaptor

**\*CRA\*1-8/1D\*M\*W3**

* Channel Rail Adaptor		<b>CRA</b>
* STAUFF Group	1 to 8 (DIN Group 0 to 8)	<b>1-8/1D</b>
* Thread code	Metric ISO thread	<b>M</b>
	Unified coarse (UNC) thread	<b>U</b>
* Material code	Carbon Steel, zinc/nickel-plated	<b>W3</b>
	Stainless Steel V4A	<b>W5</b>
	1.4401 / 1.4571 (AISI 316 / 316 Ti)	

The Channel Rail Adaptor, type CRA 1-8/1D is also suitable for Twin Series, STAUFF Group 1D.

All threaded parts are available with Metric ISO thread or unified coarse (UNC) thread according to dimension table. Alternative materials and surface finishings are available upon request. Consult STAUFF for further information.

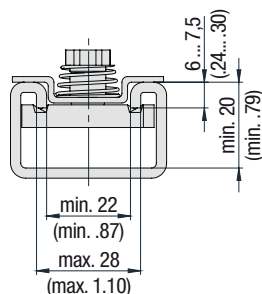


### Compatibility with Channel Rails

The STAUFF Channel Rail Adaptor, type CRA, is suitable for various channel rails, including the following types:

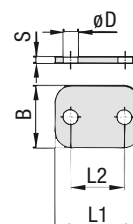
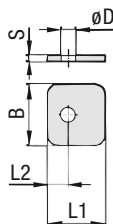
HALFEN	HILTI	UNISTRUT®	STAUFF (Cushion Clamp Series)
HM 41/41	MQ-21, MQ-41, MQ-52, MQ-72	P1000, P1000T, P1000V, P1000VT, P1001	SCS-048-1-PL, SCS-048-1-GR
HZA 41/22	MQ-21U, MQ-41U, MQ-72U	P2000, P2000T	SCS-120-1-PL, SCS-120-1-GR
HZM 41/41	MQ-21D, MQ-41D, MQ-52-72D	P3003, P3003T, P3300V, P3300VT, P3301	See page A83 for technical information.
HZM 41/22		P4000, P4000T	
HL 41/41, HL 41/B2		P5000, P5000T, P5001, P5500, P5500T, P5501	

Consult STAUFF to check compatibility with additional types of channel rails.



#### Basic dimensional requirements for channel rails to be used with STAUFF Channel Rail Adaptors, type CRA

**Cover Plate**  
**Type DP**



STAUFF Group 1

STAUFF Group 1A to 8

**Order Codes**

**Cover Plate**

**\*DP\*1\*W3**

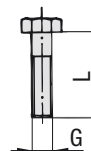
- \* Cover Plate **DP**
- \* STAUFF Group **1**
- \* Material code Carbon Steel, zinc/nickel-plated **W3**  
Stainless Steel V2A **W4**  
1.4301 / 1.4305 (AISI 304 / 303)  
Stainless Steel V4A **W5**  
1.4401 / 1.4571 (AISI 316 / 316 Ti)

Group STAUFF	DIN	Dimensions (mm/in)					Order Codes (Standard Options)
		L1	L2	B	S	ØD	
1	0	28	9,5	30	3	7	DP 1 W3
		1.10	.37	1.18	.12	.28	
1A	1	34	20	30	3	7	DP 1A W3
		1.34	.79	1.18	.12	.28	
2	2	40,5	26	30	3	7	DP 2 W3
		1.59	1.02	1.18	.12	.28	
3	3	48	33	30	3	7	DP 3 W3
		1.89	1.30	1.18	.12	.28	
4	4	57	40	30	3	7	DP 4 W3
		2.24	1.57	1.18	.12	.28	
5	5	70	52	30	3	7	DP 5 W3
		2.76	2.05	1.18	.12	.28	
6	6	86	66	30	3	7	DP 6 W3
		3.39	2.60	1.18	.12	.28	
7	7	118	94	30	5	7	DP 7 W3
		4.65	3.70	1.18	.20	.28	
8	8	144	120	30	5	7	DP 8 W3
		5.67	4.72	1.18	.20	.28	

Alternative materials and surface finishings are available upon request. Consult STAUFF for further information.

**Hexagon Head Bolt**

**Type AS (for Use with Cover Plate DP)**



**Hexagon Head Bolt AS** (according to DIN 931 / 933 or ANSI / ASME B18.2.1.)  
Dimensions applicable only when used with Cover Plate DP

**Order Codes**

**Hexagon Head Bolt**

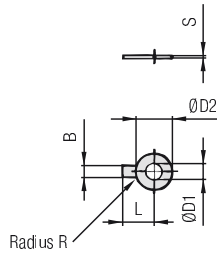
**\*AS\*1\*M\*W3**

- \* Type of bolt Hexagon Head Bolt (according to DIN 931 / 933 or ANSI / ASME B18.2.1.) **AS**
- \* STAUFF Group **1**
- \* Thread code Metric ISO thread **M**  
Unified coarse (UNC) thread **U**
- \* Material code Carbon Steel, zinc/nickel-plated **W3**  
Stainless Steel V2A **W4**  
1.4301 / 1.4305 (AISI 304 / 303)  
Stainless Steel V4A **W5**  
1.4401 / 1.4571 (AISI 316 / 316 Ti)

Group STAUFF	DIN	Dimensions (mm/in)		Order Codes (Standard Options)
		Thread	G x L	
1	0	M6 x 30		AS 1 M W3
		1/4-20 UNC x 1-1/4		AS 1 U W3
1A	1	M6 x 30		AS 1A M W3
		1/4-20 UNC x 1-1/4		AS 1A U W3
2	2	M6 x 35		AS 2 M W3
		1/4-20 UNC x 1-3/8		AS 2 U W3
3	3	M6 x 40		AS 3 M W3
		1/4-20 UNC x 1-1/2		AS 3 U W3
4	4	M6 x 45		AS 4 M W3
		1/4-20 UNC x 1-7/8		AS 4 U W3
5	5	M6 x 60		AS 5 M W3
		1/4-20 UNC x 2-3/8		AS 5 U W3
6	6	M6 x 70		AS 6 M W3
		1/4-20 UNC x 2-3/4		AS 6 U W3
7	7	M6 x 100		AS 7 M W3
		1/4-20 UNC x 4		AS 7 U W3
8	8	M6 x 125		AS 8 M W3
		1/4-20 UNC x 4-7/8		AS 8 U W3

All threaded parts are available with Metric ISO thread or unified coarse (UNC) thread according to dimension table. Alternative materials and surface finishings are available upon request. Consult STAUFF for further information.

### Safety Washer Type SI (DIN 93)



**Safety Washer SI** (according to DIN 93)

Group STAUFF	DIN	Dimensions (mm / in)						Order Codes (Standard Options)
		ØD1	B	ØD2	L	R	S	
1 to 8	0 to 8	6,4	7	19	18	4	0,5	SI 6,4 DIN 93 W3
		.25	.28	.75	.71	.16	.02	

Safety Washers, type SI are used as locking devices to prevent Hexagon Head Bolts, type AS from loosening.  
Safety Washers, type SI are suitable for all Standard Series group sizes.

Alternative materials and surface finishings are available upon request. Consult STAUFF for further information.



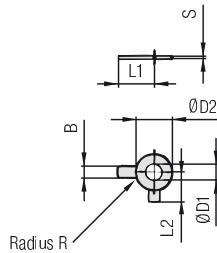
#### Order Codes

**Safety Washer** \*SI\*6,4\*DIN 93\*W3

\* Type of washer Safety washer with 1 tab (according to DIN 93) **SI 6,4 DIN 93**

\* Material code Carbon Steel, zinc/nickel-plated **W3**

### Safety Washer Type SI (DIN 463)



**Safety Washer SI** (according to DIN 463)

Group STAUFF	DIN	Dimensions (mm / in)						Order Codes (Standard Options)	
		ØD1	B	ØD2	L1	L2	R		S
1 to 8	0 to 8	6,4	7	12	18	9	4	0,5	SI 6,4 DIN 463 W3
		.25	.28	.47	.71	.35	.16	.02	

Safety Washers, type SI are used as locking devices to prevent Hexagon Head Bolts, type AS from loosening.  
Safety Washers, type SI are suitable for all Standard Series group sizes.

Alternative materials and surface finishings are available upon request. Consult STAUFF for further information.



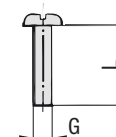
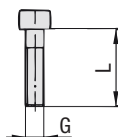
#### Order Codes

**Safety Washer** \*SI\*6,4\*DIN 463\*W3

\* Type of washer Safety washer with 2 tabs (according to DIN 463) **SI 6,4 DIN 463**

\* Material code Carbon Steel, zinc/nickel-plated **W3**

**Socket Cap Screw Type IS**      **Slotted Head Screw Type LI**



**Socket Cap Screw IS**

(according to ISO 4762 or ANSI / ASME B18.3)

Dimensions applicable only when used without Cover Plate DP

**Slotted Head Screw LI**

(according to ISO 1207 or ANSI / ASME B18.6.3)

Dimensions applicable only when used without Cover Plate DP

**Order Codes**

**Socket Cap Screw**

**\*IS\*1\*M\*W3**

**Slotted Head Screw**

**\*LI\*1\*M\*W3**

\* Type of bolt      Socket Cap Screw (according to ISO 4762 or ANSI / ASME B18.3)      **IS**  
 Slotted Head Screw (according to ISO 1207 or ANSI / ASME B18.6.3)      **LI**

Please note:      Socket cap screws IS and slotted head screws LI have to be used in conjunction with washers US, which are available separately.

\* STAUFF Group      **1**

\* Thread code      Metric ISO thread      **M**  
 Unified coarse (UNC) thread      **U**

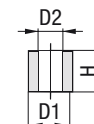
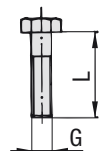
\* Material code      Carbon Steel, zinc/nickel-plated      **W3**  
 Stainless Steel V2A      **W4**  
 1.4301 / 1.4305 (AISI 304 / 303)      **W5**  
 Stainless Steel V4A      **W5**  
 1.4401 / 1.4571 (AISI 316 / 316 Ti)

Group STAUFF	DIN	Dimensions (mm/in) Thread G x L	Order Codes (Standard Options)	
			Socket Cap Screws	Slotted Head Screws
1	0	M6 x 20	IS 1 M W3	LI 1 M W3
		1/4-20 UNC x 3/4	IS 1 U W3	LI 1 U W3
1A	1	M6 x 20	IS 1A M W3	LI 1A M W3
		1/4-20 UNC x 3/4	IS 1A U W3	LI 1A U W3
2	2	M6 x 25	IS 2 M W3	LI 2 M W3
		1/4-20 UNC x 1	IS 2 U W3	LI 2 U W3
3	3	M6 x 30	IS 3 M W3	LI 3 M W3
		1/4-20 UNC x 1-1/8	IS 3 U W3	LI 3 U W3
4	4	M6 x 35	IS 4 M W3	LI 4 M W3
		1/4-20 UNC x 1-3/8	IS 4 U W3	LI 4 U W3
5	5	M6 x 50	IS 5 M W3	LI 5 M W3
		1/4-20 UNC x 2	IS 5 U W3	LI 5 U W3
6	6	M6 x 60	IS 6 M W3	LI 6 M W3
		1/4-20 UNC x 2-1/2	IS 6 U W3	LI 6 U W3
7	7	M6 x 90	IS 7 M W3	ON REQUEST ONLY
		1/4-20 UNC x 3-3/8	IS 7 U W3	ON REQUEST ONLY
8	8	M6 x 110	IS 8 M W3	ON REQUEST ONLY
		1/4-20 UNC x 4-3/8	IS 8 U W3	ON REQUEST ONLY

All threaded parts are available with Metric ISO thread or unified coarse (UNC) thread according to dimension table. Alternative materials and surface finishings are available upon request. Consult STAUFF for further information.

**Hexagon Head Bolt Type ASE**

**Insert Type ES / EP**



**Hexagon Head Bolt ASE**

(according to DIN 931 / 933 or ANSI / ASME B18.2.1.)

Dimensions applicable only when used with Inserts EP / ES

**Inserts ES (Steel) / EP (Plastic)**

**Order Codes**

**Hexagon Head Bolt**

**\*ASE\*1\*M\*W3**

\* Type of bolt      Hexagon Head Bolt (according to DIN 931 / 933 or ANSI / ASME B18.2.1.)      **AS**  
 for use with Insert ES / EP      **E**

\* STAUFF Group      **1**

\* Thread code      Metric ISO thread      **M**  
 Unified coarse (UNC) thread      **U**

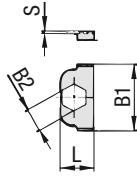
\* Material code      Carbon Steel, zinc/nickel-plated      **W3**  
 Stainless Steel V2A      **W4**  
 1.4301 / 1.4305 (AISI 304 / 303)      **W5**  
 Stainless Steel V4A      **W5**  
 1.4401 / 1.4571 (AISI 316 / 316 Ti)

Group STAUFF	DIN	Dimensions (mm/in) Thread G x L	Order Codes (Standard Options)	
			Hexagon Head Bolt	Insert
1	0	M6 x 27	ASE 1 M W3	ES 1 M W3
		1/4-20 UNC x 1-1/8	ASE 1 U W3	EP 1 U W3
1A	1	M6 x 27	ASE 1A M W3	ES 1A M W3
		1/4-20 UNC x 1-1/8	ASE 1A U W3	EP 1A U W3
2	2	M6 x 32	ASE 2 M W3	ES 2 M W3
		1/4-20 UNC x 1-3/8	ASE 2 U W3	EP 2 U W3
3	3	M6 x 35	ASE 3 M W3	ES 3 M W3
		1/4-20 UNC x 1-3/8	ASE 3 U W3	EP 3 U W3
4	4	M6 x 42	ASE 4 M W3	ES 4 M W3
		1/4-20 UNC x 1-5/8	ASE 4 U W3	EP 4 U W3
5	5	M6 x 57	ASE 5 M W3	ES 5 M W3
		1/4-20 UNC x 2-3/8	ASE 5 U W3	EP 5 U W3
6	6	M6 x 65	ASE 6 M W3	ES 6 M W3
		1/4-20 UNC x 2-3/4	ASE 6 U W3	EP 6 U W3
7	7	M6 x 95	ASE 7 M W3	ES 7 M W3
		1/4-20 UNC x 4	ASE 7 U W3	EP 7 U W3
8	8	M6 x 118	ASE 8 M W3	ES 8 M W3
		1/4-20 UNC x 4-3/4	ASE 8 U W3	EP 8 U W3

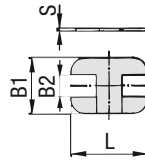
Group STAUFF	DIN	Dimensions (mm/in)				Order Codes (Standard Options)	
		D1	D2	H ES	H EP	ES (Steel)	EP (Plastic)
1 to 8	0 to 8	11,8 .46	6,5 .26	7,8 .31	8,6 .34	ES (Steel)	EP (Plastic)

All threaded parts are available with Metric ISO thread or unified coarse (UNC) thread according to dimension table. Alternative materials and surface finishings are available upon request. Consult STAUFF for further information.

### Safety Locking Plate (for Use with Stacking Bolt AF) Type SIG



STAUFF Group 1



STAUFF Group 1A to 8



Group STAUFF	DIN	Dimensions (mm / in)				Order Codes (Standard Options)
		L	B1	B2	S	
1	0	16	32	11,2	1	SIG 1 W3
		.63	1.26	.44	.04	
1A	1	33	28	11,2	1	SIG 1A W3
		1.30	1.10	.44	.04	
2	2	39	28	11,2	1	SIG 2 W3
		1.54	1.10	.44	.04	
3	3	47	28	11,2	1	SIG 3 W3
		1.85	1.10	.44	.04	
4	4	56	28	11,2	1	SIG 4 W3
		2.20	1.10	.44	.04	
5	5	69	28	11,2	1	SIG 5 W3
		2.72	1.10	.44	.04	
6	6	85	28	11,2	1	SIG 6 W3
		3.35	1.10	.44	.04	
7	7	117	28	11,2	1	SIG 7 W3
		4.61	1.10	.44	.04	
8	8	143	28	11,2	1	SIG 8 W3
		5.63	1.10	.44	.04	

#### Order Codes

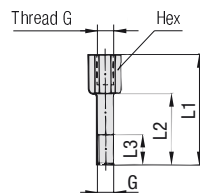
##### Safety Locking Plate

**\*SIG\*1\*W3**

* Safety Locking Plate		<b>SIG</b>
* STAUFF Group		<b>1</b>
* Material code	Carbon Steel, zinc/nickel-plated	<b>W3</b>
	Stainless Steel V2A	<b>W4</b>
	1.4301 / 1.4305 (AISI 304 / 303)	<b>W4</b>
	Stainless Steel V4A	<b>W5</b>
	1.4401 / 1.4571 (AISI 316 / 316 Ti)	<b>W5</b>

Alternative materials and surface finishings are available upon request. Consult STAUFF for further information.

### Stacking Bolt (for Use with Safety Locking Plate SIG) Type AF



Group STAUFF	DIN	Dimensions (mm / in)					Order Codes (Standard Options)
		Thread G	L1	L2	L3 min.	Hex	
1	0	M6	34	20	12	11	AF 1 M W3
		1/4-20 UNC	1.34	.79	.47	.43	AF 1 U W3
1A	1	M6	34	20	12	11	AF 1A M W3
		1/4-20 UNC	1.34	.79	.47	.43	AF 1A U W3
2	2	M6	40	25	12	11	AF 2 M W3
		1/4-20 UNC	1.57	.98	.47	.43	AF 2 U W3
3	3	M6	44	30	12	11	AF 3 M W3
		1/4-20 UNC	1.73	1.18	.47	.43	AF 3 U W3
4	4	M6	49	35	12	11	AF 4 M W3
		1/4-20 UNC	1.93	1.38	.47	.43	AF 4 U W3
5	5	M6	64	50	12	11	AF 5 M W3
		1/4-20 UNC	2.52	1.97	.47	.43	AF 5 U W3
6	6	M6	74	60	12	11	AF 6 M W3
		1/4-20 UNC	2.91	2.36	.47	.43	AF 6 U W3
7	7	M6	99	85	12	11	AF 7 M W3
		1/4-20 UNC	3.90	3.35	.47	.43	AF 7 U W3
8	8	M6	124	110	12	11	AF 8 M W3
		1/4-20 UNC	4.88	4.33	.47	.43	AF 8 U W3

#### Order Codes

##### Stacking Bolt

**\*AF\*1\*M\*W3**

* Type of bolt	Stacking Bolt (according to STAUFF Standard)	<b>AF</b>
* STAUFF Group		<b>1</b>
* Thread code	Metric ISO thread	<b>M</b>
	Unified coarse (UNC) thread	<b>U</b>
* Material code	Carbon Steel, zinc/nickel-plated	<b>W3</b>
	Stainless Steel V2A	<b>W4</b>
	1.4301 / 1.4305 (AISI 304 / 303)	<b>W4</b>
	Stainless Steel V4A	<b>W5</b>
	1.4401 / 1.4571 (AISI 316 / 316 Ti)	<b>W5</b>

All threaded parts are available with Metric ISO thread or unified coarse (UNC) thread according to dimension table. Alternative materials and surface finishings are available upon request. Consult STAUFF for further information.



### ① Type of Installation

Please select the type of installation (e.g. Weld Plates, Rail Nuts etc.) and add the corresponding Code to position ① of the order code for your clamp assembly.

Without Installation Equipment  
Code: **none**

#### Installation on Weld Plate

Single Weld Plate  
Code: **SP**

Elongated Weld Plate  
Code: **SPV**

Twin Weld Plate (for STAUFF Group 1 to 6 only)  
Code: **DSP**

Group Weld Plate (for STAUFF Group 1 to 6 only)  
Code: **RAP**

Angled Weld Plate (for STAUFF Group 1 to 6 only)  
Code: **WSP**

Bridge Weld Plate (for STAUFF Group 1A to 6 only)  
Code: **BSP**

#### Installation on Mounting / Channel Rail

Hexagon Rail Nut  
Code: **SM** (Carbon Steel)  
Code: **SMG** (Stainless Steel)

Channel Rail Adaptor  
Code: **CRA**

### ② Group Size & Diameter

Please select the required group size and diameter and add the corresponding Code to position ② of the order code for your clamp assembly.

Group STAUFF (DIN)	Outside Diameter P / T / H (mm)	Availability of Clamp Body Materials & Designs			Code
		Profiled Design	Type H	Type RI	
1 (0)	6	●	●	○	106
	6,4	●	●	○	106,4
	8	●	●	○	108
	9,5	●	●	○	109,5
	10	●	●	○	110
1A (1)	12	●	●	○	112
	6	●	●	○	106A
	6,4	●	●	○	106,4A
	8	●	●	○	108A
	9,5	●	●	○	109,5A
2 (2)	10	●	●	○	110A
	12	●	●	○	112A
	12,7	●	●	○	212,7
	13,5	●	●	○	213,5
	14	●	●	○	214
	15	●	●	○	215
	16	●	●	○	216
3 (3)	17,2	●	●	○	217,2
	18	●	●	○	218
	19	●	●	○	319
	20	●	●	○	320
4 (4)	21,3	●	●	○	321,3
	22	●	●	○	322
	25	●	●	○	325
	25,4	●	●	○	325,4
	6	○	○	●	406
	8	○	○	●	408
	10	○	○	●	410
	12	○	○	●	412
	12,7	○	○	●	412,7
	14	○	○	●	414
	15	○	○	●	415
	16	○	○	●	416
	17,2	○	○	●	417,2
18	○	○	●	418	
19	○	○	●	419	
26,9	●	●	○	426,9	
28	●	●	○	428	
28,6	●	○	○	428,6	
30	●	●	○	430	
32	●	●	○	432	

Group STAUFF (DIN)	Outside Diameter P / T / H (mm)	Availability of Clamp Body Materials & Designs			Code
		Profiled Design	Type H	Type RI	
5 (5)	32	●	●	○	532
	33,7	●	●	○	533,7
	35	●	●	○	535
	38	●	●	○	538
	40	●	●	○	540
	41,3	●	○	○	541,3
	42	●	●	○	542
6 (6)	20	○	○	●	620
	21,3	○	○	●	621,3
	22	○	○	●	622
	25	○	○	●	625
	26,9	○	○	●	626,9
	28	○	○	●	628
	30	○	○	●	630
	32	○	○	●	632
	44,5	●	●	○	644,5
	48,3	●	●	○	648,3
7 (7)	50,8	●	●	○	650,8
	54	●	●	○	654
	57,2	●	●	○	757,2
	60,3	●	●	○	760,3
	63,5	●	●	○	763,5
8 (8)	70	●	●	○	770
	73	●	●	○	773
	76,1	●	●	○	776,1
8 (8)	88,9	●	●	○	888,9
	102	●	●	○	8102L

● Standard Option

Additional outside diameters are available upon request.  
Please consult STAUFF for further information.

Please see pages A22 and A23 with detailed order examples for some of the most popular Standard Series clamp assemblies.

### ③ Clamp Body Design & Material

Please select the design and material of your clamp body and add the corresponding Code to position ③ of the order code for your clamp assembly.

Please check the availability of the selected clamp body design and material according to the matrix table in ②.

#### Profiled Design



Polypropylene  
Code: **PP**



Polyamide  
Code: **PA**



Thermoplastic Elastomer (87 Shore-A)  
Code: **SA**



Aluminium  
Code: **AL** (for STAUFF Group 1A to 6 only)

#### Type H (Smooth)



Polypropylene  
Code: **PPH**



Polyamide  
Code: **PAH**



Thermoplastic Elastomer (87 Shore-A)  
Code: **SAH**

#### Type RI (with Rubber Insert)



Polypropylene  
Code: **PPR** (for STAUFF Group 4 and 6 only)



Polyamide  
Code: **PAR** (for STAUFF Group 4 and 6 only)

See pages A88 / A89 for material properties and technical information.

Please consult STAUFF for further details on fire-proof clamp body materials, tested and approved according to several international fire-protection standards.

### ④ Mounting & Fitting Combination

Please select the mounting and fitting combination (e.g. bolts, screws, cover plates etc.) and add the corresponding Code to position ④ of the order code for your clamp assembly.

#### Installation with Cover Plate and Bolts

Cover Plate DP with  
Hexagon Head Bolts AS  
Code: **DP-AS**

Cover Plate DP with  
Socket Cap Screws IS\*  
Code: **DP-IS**

#### Installation with Locking Plate and Bolts

Safety Locking Plate SIG with  
Stacking Bolts AF  
Code: **SIG-AF**

#### Installation with Inserts and Bolts

Inserts EP (Plastic) with  
Hexagon Head Bolts ASE  
Code: **EP-AS**

Inserts ES (Steel) with  
Hexagon Head Bolts ASE  
Code: **ES-AS**

#### Installation with Bolts only

Socket Cap Screws IS (Washers US included)  
Code: **IS**

Slotted Head Screws LI (Washers US included)  
Code: **LI** (for STAUFF Group 1 to 6 only)

\* Special lengths of Socket Cap Screws IS required. For exact lengths, please see details of Hexagon Head Bolt, type AS (for use with Cover Plates DP) on page A16.

### ⑤ Thread Type

Please select the required thread type and add the corresponding Code to position ⑤ of the order code for your clamp assembly.

Metric ISO thread  
Code: **M**

Unified coarse (UNC) thread  
Code: **U**

All threaded parts are available with Metric ISO thread or unified coarse (UNC) thread according to dimension table.

### ⑥ Material & Surface Finishing

Please select the required material & surface finishing of the metal parts and add the corresponding Code to position ⑥ of the order code for your clamp assembly.

Metal parts made of Carbon Steel, untreated **W1**

Metal parts made of Carbon Steel, phosphated **W2**

Metal parts made of Carbon Steel, zinc/nickel-plated **W3**

Metal parts made of Stainless Steel V2A  
1.4301 / 1.4305 (AISI 304 / 303) **W4**

Metal parts made of Stainless Steel V4A  
1.4401 / 1.4571 (AISI 316 / 316 Ti) **W5**

Weld Plate made of Carbon Steel, phosphated; Other metal parts made of Carbon Steel, zinc/nickel-plated **W10**

Individual combinations of alternative materials and surface finishings are available upon request. Consult STAUFF for further information.

### ⑦ Assembling & Kitting

If required, please select an additional assembling and kitting option and add the corresponding Code to the last position of the order code for your clamp assembly.

#### Components supplied separately

Code: **none** (standard option)

#### Components assembled

Code: **#A** (special option)

#### Components packed in kits

Code: **#K** (special option)





- 2x **Hexagon Head Bolt**  
Surface: W3  
Thread: Metric
- 1x **Cover Plate**  
Surface: W3
- 1x **Clamp Body** (two halves)  
STAUFF Group 2 (DIN 2)  
O.D. 12,7 mm / .50 in  
Material: Polypropylene  
Profiled inside surface  
with tension clearance
- 1x **Single Weld Plate**  
Surface: W2  
Thread: Metric

**Order Code****SP 212,7 PP DP-AS M W10**

W10 is the standard option for this type of installation.



- 2x **Socket Cap Screw**  
with Washer  
Surface: W3  
Thread: Metric
- 1x **Clamp Body** (two halves)  
STAUFF Group 2 (DIN 2)  
O.D. 12,7 mm / .50 in  
Material: Polypropylene  
Profiled inside surface  
with tension clearance
- 1x **Single Weld Plate**  
Surface: W2  
Thread: Metric

**Order Code****SP 212,7 PP IS M W10**

W10 is the standard option for this type of installation.



- 2x **Slotted Head Screw**  
with Washer  
Surface: W3  
Thread: Metric
- 1x **Clamp Body** (two halves)  
STAUFF Group 2 (DIN 2)  
O.D. 12,7 mm / .50 in  
Material: Polypropylene  
Profiled inside surface  
with tension clearance
- 1x **Single Weld Plate**  
Surface: W2  
Thread: Metric

**Order Code****SP 212,7 PP LI M W10**

W10 is the standard option for this type of installation.  
Available up to STAUFF Group 6 (DIN Group 6) only.



- 2x **Hexagon Head Bolt**  
Surface: W3  
Thread: Metric
- 1x **Cover Plate**  
Surface: W3
- 1x **Clamp Body** (two halves)  
STAUFF Group 2 (DIN 2)  
O.D. 12,7 mm / .50 in  
Material: Polypropylene  
Profiled inside surface  
with tension clearance
- 1x **Elongated Weld Plate**  
Surface: W2  
Thread: Metric

**Order Code****SPV 212,7 PP DP-AS M W10**

W10 is the standard option for this type of installation.



- 2x **Socket Cap Screw**  
with Washer  
Surface: W3  
Thread: Metric
- 1x **Clamp Body** (two halves)  
STAUFF Group 2 (DIN 2)  
O.D. 12,7 mm / .50 in  
Material: Polypropylene  
Profiled inside surface  
with tension clearance
- 1x **Elongated Weld Plate**  
Surface: W2  
Thread: Metric

**Order Code****SPV 212,7 PP IS M W10**

W10 is the standard option for this type of installation.



- 2x **Slotted Head Screw**  
with Washer  
Surface: W3  
Thread: Metric
- 1x **Clamp Body** (two halves)  
STAUFF Group 2 (DIN 2)  
O.D. 12,7 mm / .50 in  
Material: Polypropylene  
Profiled inside surface  
with tension clearance
- 1x **Elongated Weld Plate**  
Surface: W2  
Thread: Metric

**Order Code****SPV 212,7 PP LI M W10**

W10 is the standard option for this type of installation.  
Available up to STAUFF Group 6 (DIN Group 6) only.



- 2x **Hexagon Head Bolt**  
Surface: W3  
Thread: Metric
- 1x **Cover Plate**  
Surface: W3
- 1x **Clamp Body** (two halves)  
STAUFF Group 2 (DIN 2)  
O.D. 12,7 mm / .50 in  
Material: Polypropylene  
Profiled inside surface  
with tension clearance
- 2x **Hexagon Rail Nut**  
Surface: W3  
Thread: Metric

**Order Code** (Mounting Rail TS not included.)**SM 212,7 PP DP-AS M W3**

W3 is the standard option for this type of installation.



- 2x **Socket Cap Screw**  
with Washer  
Surface: W3  
Thread: Metric
- 1x **Clamp Body** (two halves)  
STAUFF Group 2 (DIN 2)  
O.D. 12,7 mm / .50 in  
Material: Polypropylene  
Profiled inside surface  
with tension clearance
- 2x **Hexagon Rail Nut**  
Surface: W3  
Thread: Metric

**Order Code** (Mounting Rail TS not included.)**SM 212,7 PP IS M W3**

W3 is the standard option for this type of installation.



- 2x **Slotted Head Screw**  
with Washer  
Surface: W3  
Thread: Metric
- 1x **Clamp Body** (two halves)  
STAUFF Group 2 (DIN 2)  
O.D. 12,7 mm / .50 in  
Material: Polypropylene  
Profiled inside surface  
with tension clearance
- 2x **Hexagon Rail Nut**  
Surface: W3  
Thread: Metric

**Order Code** (Mounting Rail TS not included.)**SM 212,7 PP LI M W3**

W3 is the standard option for this type of installation.  
Available up to STAUFF Group 6 (DIN Group 6) only.



- 2x **Hexagon Head Bolt**  
Surface: W3  
Thread: Metric
- 1x **Cover Plate**  
Surface: W3
- 1x **Clamp Body** (two halves)  
STAUFF Group 2 (DIN 2)  
O.D. 12,7 mm / .50 in  
Material: Polypropylene  
Profiled inside surface  
with tension clearance

### Order Code

**212,7 PP DP-AS M W3**

W3 is the standard option for this type of installation.



- 2x **Socket Cap Screw**  
with Washer  
Surface: W3  
Thread: Metric
- 1x **Clamp Body** (two halves)  
STAUFF Group 2 (DIN 2)  
O.D. 12,7 mm / .50 in  
Material: Polypropylene  
Profiled inside surface  
with tension clearance

### Order Code

**212,7 PP IS M W3**

W3 is the standard option for this type of installation.



- 2x **Slotted Head Screw**  
with Washer  
Surface: W3  
Thread: Metric
- 1x **Clamp Body** (two halves)  
STAUFF Group 2 (DIN 2)  
Tube-O.D. 12,7 mm / .50 in  
Material: Polypropylene  
Profiled inside surface  
with tension clearance

### Order Code

**212,7 PP LI M W3**

W3 is the standard option for this type of installation.



- 2x **Stacking Bolt**  
Surface: W3  
Thread: Metric
- 1x **Safety Locking Plate**  
Surface: W3
- 1x **Clamp Body** (two halves)  
STAUFF Group 2 (DIN 2)  
O.D. 12,7 mm / .50 in  
Material: Polypropylene  
Profiled inside surface  
with tension clearance

### Order Code

**212,7 PP SIG-AF M W3**

W3 is the standard option for this type of installation.



- 1x **Socket Cap Screw**  
with Washer  
Surface: W3  
Thread: Metric
- 1x **Clamp Body** (two halves)  
STAUFF Group 1 (DIN 0)  
O.D. 6 mm / .24 in  
Material: Polypropylene  
Profiled inside surface  
with tension clearance  
Thread: Metric
- 1x **Single Weld Plate**  
Surface: W2  
Thread: Metric

### Order Code\*

**SP 106 PP IS M W10**

W10 is the standard option for this type of installation.

### Thread codes

All threaded parts are available with Metric ISO thread or unified coarse (UNC) thread according to dimension table.

Metric ISO thread	<b>M</b>
Unified coarse (UNC) thread	<b>U</b>

### Material codes

The below listed material codes describe the materials and surface finishings of metal parts that are most relevant for Standard Series clamp assemblies. Individual combinations of alternative materials and surface finishings are available upon request. Consult STAUFF for further information.

Metal parts made of Carbon Steel, untreated	<b>W1</b>
Metal parts made of Carbon Steel, phosphated	<b>W2</b>
Metal parts made of Carbon Steel, zinc/nickel-plated	<b>W3</b>
Metal parts made of Stainless Steel V2A	<b>W4</b>
1.4301 / 1.4305 (AISI 304 / 303)	<b>W4</b>
Metal parts made of Stainless Steel V4A	<b>W5</b>
1.4401 / 1.4571 (AISI 316 / 316 Ti)	<b>W5</b>
Weld Plate made of Carbon Steel, phosphated; Other metal parts made of Carbon Steel, zinc/nickel-plated	<b>W10</b>

### Technical Notes

\* Because of their design, STAUFF Group 1 (DIN Group 0) clamp assemblies only include one single bolt / screw.



- 2x **Hexagon Head Bolt**  
Surface: W3  
Thread: Metric
- 2x **Insert**  
Material: Plastic
- 1x **Clamp Body** (two halves)  
STAUFF Group 2 (DIN 2)  
O.D. 12,7 mm / .50 in  
Material: Polypropylene  
Profiled inside surface  
with tension clearance
- 1x **Single Weld Plate**  
Surface: W2  
Thread: Metric

### Order Code

**SP 212,7 PP EP-AS M W10**

W10 is the standard option for this type of installation.



- 2x **Hexagon Head Bolt**  
Surface: W3  
Thread: Metric
- 2x **Insert**  
Material: Plastic
- 1x **Clamp Body** (two halves)  
STAUFF Group 2 (DIN 2)  
O.D. 12,7 mm / .50 in  
Material: Polypropylene  
Profiled inside surface  
with tension clearance
- 1x **Elongated Weld Plate**  
Surface: W2  
Thread: Metric

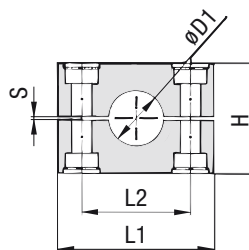
### Order Code

**SPV 212,7 PP EP-AS M W10**

W10 is the standard option for this type of installation.

### Clamp Body - Profiled Design

Profiled Inside Surface with Tension Clearance



#### Order Codes

##### Clamp Body

**\*3\*006\*PP**

One clamp body is consisting of two clamp halves.

- \* 1<sup>st</sup> part of STAUFF Group **3**
- \* Exact outside diameter Ø D1 (mm) **006**
- \* Material code (see below) **PP**

#### Standard Materials



**Polypropylene**  
Colour: Green  
Material code: **PP**



**Polyamide**  
Colour: Black  
Material code: **PA**



**Thermoplastic Elastomer** (87 Shore-A)  
Colour: Black  
Material code: **SA**



**Aluminium**  
Colour: Self-Colour  
Material code: **AL**

See pages A88 / A89 for material properties and technical information.

#### Special Materials

Please consult STAUFF for further details on fire-proof clamp body materials, tested and approved according to several international fire-protection standards.

See pages A90 / A91 for material properties and technical information.

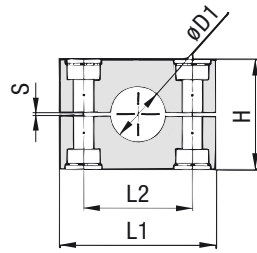
#### Product Features

- Proven, tested and trusted product in various markets
- Recommended for the safe installation of rigid pipes and tubes
- Available for all commonly used pipe and tube outside diameters
- Environmental protection due to vibration/noise reducing design
- Excellent weathering resistance, even under extreme conditions

Group	STAUFF	DIN	Outside Diameter		Nominal Bore		Order Codes (2 Clamp Halves) (** = Material)	Dimensions (mm/in)								
			Pipe / Tube Ø D1 (mm)	(in)	Pipe (in)	Copper Tube ASTM B88 (in)		L1 PP/PA/SA	L1 AL	L2	H	S min.	Width			
3S	1	6					3006 **									
		6,4	1/4				3006,4 **									
		8	5/16				3008 **									
		9,5	3/8		1/4		3009,5 **									
		10		1/8			3010 **									
		12					3012 **									
		12,7	1/2		3/8		3012,7 **	55	56	33	32	0,6	30,5			
		13,5		1/4			3013,5 **	2.16	2.20	1.30	1.26	.02	1.20			
		14					3014 **									
		15					3015 **									
		16	5/8		1/2		3016 **									
		17,2		3/8			3017,2 **									
		18					3018 **									
20					3020 **											
4S	2	19		3/4			4019 **									
		20					4020 **									
		21,3		1/2			4021,3 **									
		22			3/4		4022 **									
		25					4025 **	70	70	45	48	0,6	30,5			
		25,4	1				4025,4 **	2.76	2.76	1.77	1.89	.02	1.20			
		26,9		3/4			4026,9 **									
		28					4028 **									
		30					4030 **									
		32					5030 **									
5S	3	32	1-1/4				5032 **									
		33,7		1			5033,7 **									
		35			1-1/4		5035 **	85	85	60	60	0,6	30,5			
		38	1-1/2				5038 **	3.35	3.35	2.36	2.36	.02	1.20			
		40					5040 **									
		41,3			1-1/2		5041,3 **									
		42		1-1/4			5042 **									
6S	4	38	1-1/2				6038 **									
		42		0			6042 **									
		44,5	1-3/4				6044,5 **									
		48,3		1-1/2			6048,3 **									
		50,8	2				6050,8 **									
		54			2		6054 **	115	120	90	89	2	45			
		55					6055 **	4.53	4.72	3.54	3.50	.08	1.77			
		57					6057 **									
		57,2	2-1/4				6057,2 **									
		60,3		2			6060,3 **									
63,5	2-1/2				6063,5 **											
65					6065 **											
70	2-3/4				6070 **											

See page A25 for STAUFF Group 7S to 12S (DIN Group 5 to 10).

Additional outside diameters are available upon request. Please consult STAUFF for further information.


**Clamp Body - Profiled Design**

Profiled Inside Surface with Tension Clearance



Group	STAUFF	DIN	Outside Diameter		Nominal Bore	Order Codes (2 Clamp Halves) (** = Material)	Dimensions (mm/in)				
			Pipe / Tube Ø D1 (mm)	(in)			Pipe (in)	L1 PP/PA	L1 AL	L2	H
7S	5	60,3			7060,3 **	154	152	122	120	2	60
		65			7065 **						
		70	2-3/4		7070 **						
		73		2-1/2 (ANSI B 36-10)	7073 **						
		75			7075 **						
		76,1	3	2-1/2 (DIN EN 10220)	7076,1 **						
		80			7080 **						
		82,5			7082,5 **						
8S	6	88,9	3-1/2	3	8088,9 **	206	208	168	168	2	80
		100			8100 **						
		102	4	3-1/2	8102 **						
		108			8108 **						
		114	4-1/2	4	8114 **						
		127	5		8127 **						
		133			8133 **						
		9S	7	127	5						
133					9133 **						
140				5	9140 **						
152	6				9152 **						
159					9159 **						
165					9165 **						
168				6	9168 **						
10S	8	168		6	10168 **	336	326	265	270	3	120
		177,8			10177,8 **						
		193,7			10193,7 **						
		203	8		10203 **						
		216			10216 **						
11S	9	219		8	11219 **	470	470	395	410	8	162
		273		10	11273 **						
		324		12	11324 **						
12S	10	356		14	12356 **	630	630	534	530	20	182
		406		16	12406 **						

**Order Codes**
**Clamp Body**
**\*7\*060,3\*PP**

One clamp body is consisting of two clamp halves.

- \* 1<sup>st</sup> part of STAUFF Group
- \* Exact outside diameter Ø D1 (mm)
- \* Material code (see below)

**7  
060,3  
PP**
**Standard Materials**

**Polypropylene**  
Colour: Green  
Material code: **PP**

**Polyamide**  
Colour: Black  
Material code: **PA**

**Aluminium**  
Colour: Self-Colour  
Material code: **AL**

See pages A88 / A89 for material properties and technical information.

**Special Materials**

Please consult STAUFF for further details on fire-proof clamp body materials, tested and approved according to several international fire-protection standards.

See pages A90 / A91 for material properties and technical information.

**Product Features**

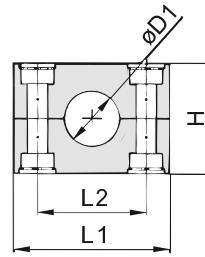
- Proven, tested and trusted product in various markets
- Recommended for the safe installation of rigid pipes and tubes
- Available for all commonly used pipe and tube outside diameters
- Environmental protection due to vibration/noise reducing design
- Excellent weathering resistance, even under extreme conditions

See page A24 for STAUFF Group 3S to 6S (DIN Group 1 to 4).

Additional outside diameters are available upon request. Please consult STAUFF for further information.

### Clamp Body ▪ Type H

Smooth Inside Surface without Tension Clearance



#### Order Codes

##### Clamp Body

**\*3\*006\*PPH**

One clamp body is consisting of two clamp halves.

- \* 1<sup>st</sup> part of STAUFF Group **3**
- \* Exact outside diameter Ø D1 (mm) **006**
- \* Material code (see below) **PPH**

#### Standard Materials



**Polypropylene**  
Colour: Green  
Material code: **PPH**



**Polyamide**  
Colour: Black  
Material code: **PAH**



**Thermoplastic Elastomer** (87 Shore-A)  
Colour: Black  
Material code: **SAH**

See pages A88 / A89 for material properties and technical information.

#### Special Materials

Please consult STAUFF for further details on fire-proof clamp body materials, tested and approved according to several international fire-protection standards.

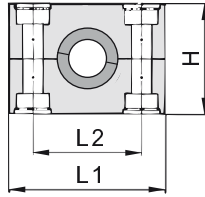
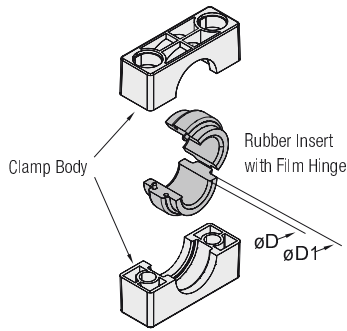
See pages A90 / A91 for material properties and technical information.

#### Product Features

- Proven, tested and trusted product in various markets
- Recommended for the safe installation of hoses and cables
- Chamfered edges avoid damaging of the hose or cable
- Available for all commonly used hose and cable outside diameters
- Excellent weathering resistance, even under extreme conditions

Group	STAUFF	DIN	Outside Diameter		Order Codes (2 Clamp Halves) (*** = Material)	Dimensions ( <sup>mm</sup> / <sub>in</sub> )					
			Hose Ø D1 (mm)	(in)		L1	L2	H	Width		
3S	1	6			3006 ***	55	2.16	33	1.30	30,5	1.20
		6,4		1/4	3006,4 ***						
		8		5/16	3008 ***						
		9,5		3/8	3009,5 ***						
		10			3010 ***						
		12			3012 ***						
		12,7		1/2	3012,7 ***						
		13,5			3013,5 ***						
		14			3014 ***						
		15			3015 ***						
		16		5/8	3016 ***						
		17,2			3017,2 ***						
18			3018 ***								
4S	2	19		3/4	4019 ***	70	2.76	45	1.77	46,5	1.83
		20			4020 ***						
		21,3			4021,3 ***						
		22			4022 ***						
		25			4025 ***						
		25,4		1	4025,4 ***						
		26,9			4026,9 ***						
		28			4028 ***						
30			4030 ***								
5S	3	30			5030 ***	85	3.35	60	2.36	58	2.28
		32		1-1/4	5032 ***						
		33,7			5033,7 ***						
		35			5035 ***						
		38		1-1/2	5038 ***						
		40			5040 ***						
		41,3			5041,3 ***						
42			5042 ***								
6S	4	38		1-1/2	6038 ***	115	4.53	90	3.54	87	3.43
		42			6042 ***						
		44,5		1-3/4	6044,5 ***						
		48,3			6048,3 ***						
		50,8		2	6050,8 ***						
		55			6055 ***						
		57			6057 ***						
		57,2		2-1/4	6057,2 ***						
		60,3			6060,3 ***						
		63,5		2-1/2	6063,5 ***						
65			6065 ***								
70		2-3/4	6070 ***								

Additional outside diameters are available upon request. Please consult STAUFF for further information.



### Clamp Body with Rubber Insert Type RI



Group	STAUFF DIN	Outside Diameter Pipe / Tube / Hose Ø D (mm) (in)	Order Codes (**R = Clamp Body Material)			Dimensions ( <sup>mm</sup> / <sub>in</sub> )				
			Clamp Assembly (Clamp Body + Rubber Insert)	Clamp Body (2 Clamp Halves)	Rubber Insert *	Ø D1	L1	L2	H	Width
4S	2	6	4006 **R	4S **R	RI 06 (4+4S)	25	70	45	46,5	30,5
		8	4008 **R		RI 08 (4+4S)					
		10	4010 **R		RI 10 (4+4S)					
		12	4012 **R		RI 12 (4+4S)					
		12,7	4012,7 **R		RI 12,7 (4+4S)					
		14	4014 **R		RI 14 (4+4S)					
		15	4015 **R		RI 15 (4+4S)					
		16	4016 **R		RI 16 (4+4S)					
		17,2	4017,2 **R		RI 17,2 (4+4S)					
		18	4018 **R		RI 18 (4+4S)					
19	4019 **R	RI 19 (4+4S)								
5S	3	20	5020 **R	5S **R	RI 20 (6+5S)	38	85	60	58	30,5
		21,3	5021,3 **R		RI 21,3 (6+5S)					
		22	5022 **R		RI 22 (6+5S)					
		25	5025 **R		RI 25 (6+5S)					
		26,9	5026,9 **R		RI 26,9 (6+5S)					
		28	5028 **R		RI 28 (6+5S)					
		30	5030 **R		RI 30 (6+5S)					
		32	5032 **R		RI 32 (6+5S)					
		32	6032 **R		RI 32 (6S)					
		33,7	6033,7 **R		RI 33,7 (6S)					
35	6035 **R	RI 35 (6S)								
38,7	6038,7 **R	RI 38,7 (6S)								
40	6040 **R	RI 40 (6S)								
42	6042 **R	RI 42 (6S)								
45,5	6045,5 **R	RI 45,5 (6S)								
48	6048 **R	RI 48 (6S)								
51	6051 **R	RI 51 (6S)								
53,4	6053,4 **R	RI 53,4 (6S)								
56,4	6056,4 **R	RI 56,4 (6S)								
7S	5	55	7055 **R	7S **R	RI 55 (7S)	88	154	122	120	60
		57	7057 **R		RI 57 (7S)					
		60	7060 **R		RI 60 (7S)					
		63,5	7063,5 **R		RI 63,5 (7S)					
		65	7065 **R		RI 65 (7S)					
		70	7070 **R		RI 70 (7S)					
		72	7072 **R		RI 72 (7S)					
		76	7076 **R		RI 76 (7S)					
8S	6	80	8080 **R	8S **R	RI 80 (8S)	114	208	168	168	80
		88,9	8088,9 **R		RI 88,9 (8S)					
		102	8102 **R		RI 102 (8S)					
		114	9114 **R		RI 114 (9S)					
9S	7	133	9133 **R	9S **R	RI 133 (9S)	150	251	205	200	91
		140	9140 **R		RI 140 (9S)					
		150	10150 **R		RI 150 (10S)					
10S	8	165	10165 **R	10S **R	RI 165 (10S)	200	336	265	270	120
		168	10168 **R		RI 168 (10S)					
		172	10172 **R		RI 172 (10S)					
		172	10172 **R		RI 172 (10S)					

\* Rubber Inserts for Heavy Series clamp bodies, STAUFF Group 4S also fit into Standard Series clamp bodies, STAUFF Group 4.  
Rubber Inserts for Heavy Series clamp bodies, STAUFF Group 5S also fit into Standard Series clamp bodies, STAUFF Group 6.

Additional outside diameters are available upon request. Please consult STAUFF for further information.

### Order Codes

#### Clamp Assembly

**\*4\*006\*PPR**

One assembly is consisting of one clamp body and one insert.

\* 1<sup>st</sup> part of STAUFF Group **4**  
\* Exact outside diameter Ø D (mm) **006**  
\* Material code (see below) **PPR**

#### Clamp Body

**\*4S\*PPR**

One clamp body is consisting of two clamp halves.

\* STAUFF Group **4S**  
\* Material code (see below) **PPR**

#### Rubber Insert

**\*RI\*06\*(4+4S)**

\* Rubber Insert **RI**  
\* Exact outside diameter Ø D (mm) **06**  
\* STAUFF Group 4S (Heavy) and 4 (Standard) **(4+4S)**  
5S (Heavy) and 6 (Standard) **(6+5S)**  
6S (Heavy) **(6S)**  
7S (Heavy) **(7S)**  
8S (Heavy) **(8S)**  
9S (Heavy) **(9S)**  
10S (Heavy) **(10S)**

### Standard Materials



**Polypropylene**  
Colour: Black  
Material code: **PPR**



**Polyamide**  
Colour: Black  
Material code: **PAR**



**Rubber Insert**  
4S to 6S: **Thermoplastic Elastomer** (73 Shore-A)  
7S to 10S: **EPDM** (70 Shore-A)  
Colour: Black

See pages A88 / A89 for material properties and technical information.

### Special Materials

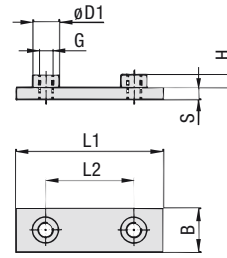
Please consult STAUFF for further details on fire-proof clamp body materials, tested and approved according to several international fire-protection standards.

See pages A90 / A91 for material properties and technical information.

### Product Features

- Proven, tested and trusted product in various markets
- Either for the extra vibration/noise reducing installation of pipes and tubes or the extra gentle installation of hoses and cables
- Available for all commonly used outside diameters
- Excellent weathering resistance, even under extreme conditions

**Weld Plate for Single Clamps**  
Type SPAL



**Order Codes**

**Weld Plate**

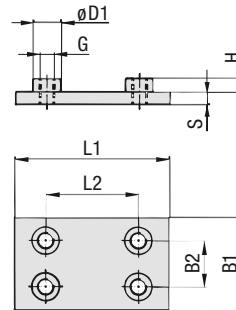
**\*SPAL\*3S\*M\*W2**

- \* Weld Plate for Single Clamps **SPAL**
- \* STAUFF Group **3S**
- \* Thread code   Metric ISO thread **M**  
                  Unified coarse (UNC) thread **U**
- \* Material code   Carbon Steel, untreated **W1**  
                  Carbon Steel, phosphated **W2**  
                  Carbon Steel, zinc/nickel-plated **W3**  
  
                  Stainless Steel V2A **W4**  
                  1.4301 / 1.4305 (AISI 304 / 303)  
                  Stainless Steel V4A **W5**  
                  1.4401 / 1.4571 (AISI 316 / 316 Ti)

Group STAUFF	DIN	Dimensions (mm/in)						Thread G	ØD1	Order Codes (Standard Options)
		L1	L2	B	S	H				
3S	1	74	33	30	8	8	M10	18	SPAL 3S M W2	
		2.91	1.30	1.18	.31	.31	3/8-16 UNC	.71	SPAL 3S U W2	
4S	2	86	45	30	8	8	M10	18	SPAL 4S M W2	
		3.39	1.77	1.18	.31	.31	3/8-16 UNC	.71	SPAL 4S U W2	
5S	3	100	60	30	8	8	M10	18	SPAL 5S M W2	
		3.94	2.36	1.18	.31	.31	3/8-16 UNC	.71	SPAL 5S U W2	
6S	4	140	90	45	10	8	M12	20	SPAL 6S M W2	
		5.51	3.54	1.77	.39	.31	7/16-14 UNC	.78	SPAL 6S U W2	
7S	5	180	122	60	10	12	M16	24	SPAL 7S M W2	
		7.09	4.80	2.36	.39	.47	5/8-11 UNC	.94	SPAL 7S U W2	
8S	6	226	168	80	15	18	M20	30	SPAL 8S M W1	
		8.90	6.61	3.15	.59	.71	3/4-10 UNC	1.18	SPAL 8S U W1	
9S	7	270	205	90	15	21	M24	35	SPAL 9S M W1	
		10.63	8.07	3.54	.59	.83	7/8-9 UNC	1.38	SPAL 9S U W1	
10S	8	340	265	120	25	21	M30	45	SPAL 10S M W1	
		13.39	10.43	4.72	.98	.83	1-1/8-7 UNC	1.77	SPAL 10S U W1	
11S	9	520	395	160	30	38	M30	50	SPAL 11S M W1	
		20.47	15.55	6.30	1.18	1.50	1-1/4-7 UNC	1.97	SPAL 11S U W1	
12S	10	680	534	180	30	38	M30	50	SPAL 12S M W1	
		27.16	21.02	7.09	1.18	1.50	1-1/4-7 UNC	1.97	SPAL 12S U W1	

All threaded parts are available with Metric ISO thread or unified coarse (UNC) thread according to dimension table. Alternative materials and surface finishings are available upon request. Consult STAUFF for further information.

**Weld Plate for Double Clamps**  
Type SPAS



**Order Codes**

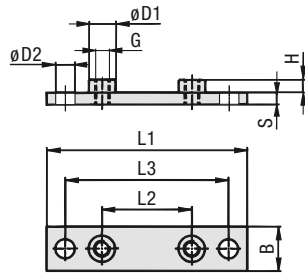
**Weld Plate**

**\*SPAS\*3S\*M\*W2**

- \* Weld Plate for Double Clamps **SPAS**
- \* STAUFF Group **3S**
- \* Thread code   Metric ISO thread **M**  
                  Unified coarse (UNC) thread **U**
- \* Material code   Carbon Steel, untreated **W1**  
                  Carbon Steel, phosphated **W2**  
                  Carbon Steel, zinc/nickel-plated **W3**  
  
                  Stainless Steel V2A **W4**  
                  1.4301 / 1.4305 (AISI 304 / 303)  
                  Stainless Steel V4A **W5**  
                  1.4401 / 1.4571 (AISI 316 / 316 Ti)

Group STAUFF	DIN	Dimensions (mm/in)						Thread G	ØD1	Order Codes (Standard Options)
		L1	L2	B1	B2	S	H			
3S	1	74	33	60	30,5	8	8	M10	18	SPAS 3S M W2
		2.91	1.30	2.36	1.20	.31	.31	3/8-16 UNC	.71	SPAS 3S U W2
4S	2	86	45	60	30,5	8	8	M10	18	SPAS 4S M W2
		3.39	1.77	2.36	1.20	.31	.31	3/8-16 UNC	.71	SPAS 4S U W2
5S	3	100	60	60	30,5	8	8	M10	18	SPAS 5S M W2
		3.94	2.36	2.36	1.20	.31	.31	3/8-16 UNC	.71	SPAS 5S U W2
6S	4	140	90	90	46	10	8	M12	20	SPAS 6S M W2
		5.51	3.54	3.54	1.81	.39	.31	7/16-14 UNC	.78	SPAS 6S U W2
7S	5	180	122	120	61	10	12	M16	24	SPAS 7S M W2
		7.09	4.80	4.72	2.40	.39	.47	5/8-11 UNC	.94	SPAS 7S U W2
8S	6	226	168	160	81	15	18	M20	30	SPAS 8S M W1
		8.90	6.61	6.61	3.19	.59	.71	3/4-10 UNC	1.18	SPAS 8S U W1
9S	7	270	205	180	91	15	21	M24	35	SPAS 9S M W1
		10.63	8.07	7.09	3.58	.59	.83	7/8-9 UNC	1.38	SPAS 9S U W1
10S	8	340	265	240	121	25	21	M30	45	SPAS 10S M W1
		13.39	10.43	9.45	4.78	.98	.83	1-1/8-7 UNC	1.77	SPAS 10S U W1
11S	9	520	395	324	166	30	38	M30	50	SPAS 11S M W1
		20.47	15.55	12.76	6.54	1.18	1.50	1-1/4-7 UNC	1.97	SPAS 11S U W1
12S	10	680	534	364	186	30	38	M30	50	SPAS 12S M W1
		27.16	21.02	14.33	7.32	1.18	1.50	1-1/4-7 UNC	1.97	SPAS 12S U W1

All threaded parts are available with Metric ISO thread or unified coarse (UNC) thread according to dimension table. Alternative materials and surface finishings are available upon request. Consult STAUFF for further information.



### Elongated Weld Plate for Single Clamps Type SPAL/DUEB


 STAUFF  
Clamps  
A

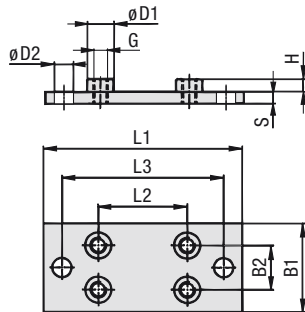
Group STAUFF	DIN	Dimensions (mm / in)								Order Codes (Standard Options)	
		L1	L2	L3	B	S	H	Thread G	ØD1	ØD2	
3S	1	113	33	85	30	8	8	M10	18	13	SPAL/DUEB 3S M W2
		4.45	1.30	3.35	1.18	.31	.31	3/8-16 UNC	.71	.51	SPAL/DUEB 3S U W2
4S	2	125	45	97	30	8	8	M10	18	13	SPAL/DUEB 4S M W2
		4.92	1.77	3.82	1.18	.31	.31	3/8-16 UNC	.71	.51	SPAL/DUEB 4S U W2
5S	3	140	60	112	30	8	8	M10	18	13	SPAL/DUEB 5S M W2
		5.51	2.36	4.41	1.18	.31	.31	3/8-16 UNC	.71	.51	SPAL/DUEB 5S U W2
6S	4	187	90	155	45	10	8	M12	20	16	SPAL/DUEB 6S M W2
		7.36	3.54	6.10	1.77	.39	.31	7/16-14 UNC	.78	.62	SPAL/DUEB 6S U W2
7S	5	238	122	198	60	10	12	M16	24	21	SPAL/DUEB 7S M W2
		9.37	4.80	7.80	2.36	.39	.47	5/8-11 UNC	.94	.83	SPAL/DUEB 7S U W2
8S	6	309	168	259	80	15	18	M20	30	26	SPAL/DUEB 8S M W1
		12.17	6.61	10.20	3.15	.59	.71	3/4-10 UNC	1.18	1.02	SPAL/DUEB 8S U W1
9S	7	370	205	310	90	15	21	M24	35	31	SPAL/DUEB 9S M W1
		14.57	8.07	12.20	3.54	.59	.83	7/8-9 UNC	1.38	1.22	SPAL/DUEB 9S U W1
10S	8	440	265	380	120	25	21	M30	45	31	SPAL/DUEB 10S M W1
		17.32	10.43	14.96	4.72	.98	.83	1-1/8-7 UNC	1.77	1.22	SPAL/DUEB 10S U W1
11S	9	590	395	530	160	30	38	M30	50	31	SPAL/DUEB 11S M W1
		23.23	15.55	20.87	6.30	1.18	1.50	1-1/4-7 UNC	1.97	1.22	SPAL/DUEB 11S U W1
12S	10	750	534	690	180	30	38	M30	50	31	SPAL/DUEB 12S M W1
		29.53	21.02	27.17	7.09	1.18	1.50	1-1/4-7 UNC	1.97	1.22	SPAL/DUEB 12S U W1

#### Order Codes

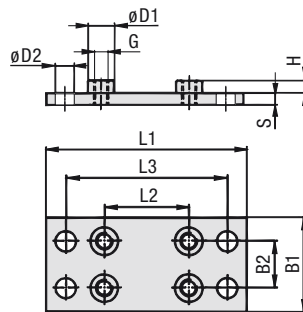
**Weld Plate \*SPAL/DUEB\*3S\*M\*W2**

- \* Elongated Weld Plate for Single Clamps **SPAL/DUEB**
- \* STAUFF Group **3S**
- \* Thread code Metric ISO thread **M**  
Unified coarse (UNC) thread **U**
- \* Material code Carbon Steel, untreated **W1**  
Carbon Steel, phosphated **W2**  
Carbon Steel, zinc/nickel-plated **W3**  
  
Stainless Steel V2A **W4**  
1.4301 / 1.4305 (AISI 304 / 303)  
Stainless Steel V4A **W5**  
1.4401 / 1.4571 (AISI 316 / 316 Ti)

All threaded parts are available with Metric ISO thread or unified coarse (UNC) thread according to dimension table.  
Alternative materials and surface finishings are available upon request. Consult STAUFF for further information.



STAUFF Group 3S to 9S



STAUFF Group 10S to 12S

### Elongated Weld Plate for Double Clamps Type SPAS/DUEB



Design for STAUFF Group 10S to 12S

Group STAUFF	DIN	Dimensions (mm / in)								Order Codes (Standard Options)		
		L1	L2	L3	B1	B2	S	H	Thread G	ØD1	ØD2	
3S	1	113	33	85	60	30,5	8	8	M10	18	13	SPAS/DUEB 3S M W2
		4.45	1.30	3.35	2.36	1.20	.31	.31	3/8-16 UNC	.71	.51	SPAS/DUEB 3S U W2
4S	2	125	45	97	60	30,5	8	8	M10	18	13	SPAS/DUEB 4S M W2
		4.92	1.77	3.82	2.36	1.20	.31	.31	3/8-16 UNC	.71	.51	SPAS/DUEB 4S U W2
5S	3	140	60	112	60	30,5	8	8	M10	18	13	SPAS/DUEB 5S M W2
		5.51	2.36	4.41	2.36	1.20	.31	.31	3/8-16 UNC	.71	.51	SPAS/DUEB 5S U W2
6S	4	187	90	155	90	46	10	8	M12	20	16	SPAS/DUEB 6S M W2
		7.36	3.54	6.10	3.54	1.81	.39	.31	7/16-14 UNC	.78	.62	SPAS/DUEB 6S U W2
7S	5	238	122	198	120	61	10	12	M16	24	21	SPAS/DUEB 7S M W2
		9.37	4.80	7.80	4.72	2.40	.39	.47	5/8-11 UNC	.94	.83	SPAS/DUEB 7S U W2
8S	6	309	168	259	160	81	15	18	M20	30	26	SPAS/DUEB 8S M W1
		12.17	6.61	10.20	6.61	3.19	.59	.71	3/4-10 UNC	1.18	1.02	SPAS/DUEB 8S U W1
9S	7	370	205	310	180	91	15	21	M24	35	31	SPAS/DUEB 9S M W1
		14.57	8.07	12.20	7.09	3.58	.59	.83	7/8-9 UNC	1.38	1.22	SPAS/DUEB 9S U W1
10S	8	440	265	380	240	121	25	21	M30	45	31	SPAS/DUEB 10S M W1
		17.32	10.43	14.96	9.45	4.78	.98	.83	1-1/8-7 UNC	1.77	1.22	SPAS/DUEB 10S U W1
11S	9	590	395	530	324	166	30	38	M30	50	31	SPAS/DUEB 11S M W1
		23.23	15.55	20.87	12.76	6.54	1.18	1.50	1-1/4-7 UNC	1.97	1.22	SPAS/DUEB 11S U W1
12S	10	750	534	690	364	186	30	38	M30	50	31	SPAS/DUEB 12S M W1
		29.53	21.02	27.17	14.33	7.32	1.18	1.50	1-1/4-7 UNC	1.97	1.22	SPAS/DUEB 12S U W1

#### Order Codes

**Weld Plate \*SPAS/DUEB\*3S\*M\*W2**

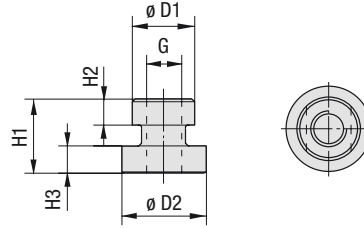
- \* Elongated Weld Plate for Double Clamps **SPAS/DUEB**
- \* STAUFF Group **3S**
- \* Thread code Metric ISO thread **M**  
Unified coarse (UNC) thread **U**
- \* Material code Carbon Steel, untreated **W1**  
Carbon Steel, phosphated **W2**  
Carbon Steel, zinc/nickel-plated **W3**  
  
Stainless Steel V2A **W4**  
1.4301 / 1.4305 (AISI 304 / 303)  
Stainless Steel V4A **W5**  
1.4401 / 1.4571 (AISI 316 / 316 Ti)

All threaded parts are available with Metric ISO thread or unified coarse (UNC) thread according to dimension table.  
Alternative materials and surface finishings are available upon request. Consult STAUFF for further information.



### Mounting Rail Nut

Type **GMV** (for Use with Mounting Rail STSV)



#### Order Codes

**Mounting Rail Nut** \***GMV\*3-5S\*M\*W3**

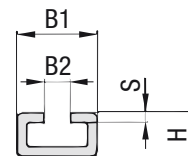
- \* Mounting Rail Nut **GMV**
- \* STAUFF Group 3S to 5S (DIN Group 1 to 3) **3-5S**  
6S (DIN Group 4) **6S**
- \* Thread code Metric ISO thread **M**  
Unified coarse (UNC) thread **U**
- \* Material code Carbon Steel, zinc/nickel-plated **W3**  
Stainless Steel V2A **W4**  
1.4301 / 1.4305 (AISI 304 / 303)  
Stainless Steel V4A **W5**  
1.4401 / 1.4571 (AISI 316 / 316 Ti)

Group STAUFF	DIN	Dimensions (mm/in)					Thread G	Order Codes (Standard Options)
		ØD1	ØD2	H1	H2	H3		
3S	1							
4S	2	17,8 .70	24 .94	21 .83	7,6 .30	7,4 .29	M10 3/8-16 UNC	GMV 3-5S M W3 GMV 3-5S U W3
5S	3							
6S	4	19,8 .78	24 .94	23 .91	8,8 .35	8,2 .32	M12 7/16-14 UNC	GMV 6S M W3 GMV 6S U W3

All threaded parts are available with Metric ISO thread or unified coarse (UNC) thread according to dimension table. Alternative materials and surface finishings are available upon request. Consult STAUFF for further information.

### Mounting Rail

Type **STSV** (for Use with Mounting Rail Nut GMV)



#### Order Codes

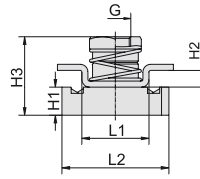
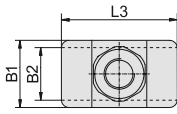
**Mounting Rail** \***STSV\*1\*W1**

- \* Mounting Rail **STSV**
- \* Length of rail 1 m / 3.28 ft **-1M**  
2 m / 6.56 ft **-2M**  
  
Alternative lengths available upon request.  
Consult STAUFF for further information.
- \* Material code Carbon Steel, untreated **W1**  
Carbon Steel, zinc/nickel-plated **W3**  
  
Stainless Steel V4A **W5**  
1.4401 / 1.4571 (AISI 316 / 316 Ti)

Group STAUFF	DIN	Dimensions (mm/in)				Order Codes (Standard Options)	
		B1	B2	H	S	Length of Rail: 1 m / 3.28ft	Length of Rail: 2 m / 6.56ft
3S	1						
4S	2						
5S	3	40 1.57	13 .51	22 .86	5 .19	STSV -1M W1	STSV -2M W1
6S	4						

Alternative materials and surface finishings are available upon request. Consult STAUFF for further information.

## Channel Rail Adaptor (for Use with Various Channel Rails) Type CRA



Group STAUFF	DIN	Dimensions (mm / in)									Order Codes (Standard Options)	
		Thread G	L1	L2	L3	B1	B2	H1	H2	H3		
3S	1											
4S	2	M10	22	35	38	22	20,5	9,2	5,5	27,5	CRA 3-5S M W3	
		3/8-16 UNC	.87	1.38	1.50	.87	.81	.36	.22	1.08	CRA 3-5S U W3	
5S	3											
6S	4	M12	21,5	35	45	25	19	9,2	5	27,5	CRA 6S M W3	
		7/16-14 UNC	.85	1.38	1.77	.98	.75	.36	.20	1.08	CRA 6S U W3	

### Order Codes

#### Adaptor

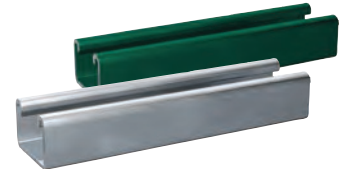
**\*CRA\*3-5S\*M\*W3**

* Channel Rail Adaptor	<b>CRA</b>
* STAUFF Group	3S to 5S (DIN Group 1 to 3) 6S (DIN Group 4)
* Thread code	Metric ISO thread Unified coarse (UNC) thread
* Material code	Carbon Steel, zinc/nickel-plated Stainless Steel V4A 1.4401 / 1.4571 (AISI 316 / 316 Ti)

All threaded parts are available with Metric ISO thread or unified coarse (UNC) thread according to dimension table. Alternative materials and surface finishings are available upon request. Consult STAUFF for further information.

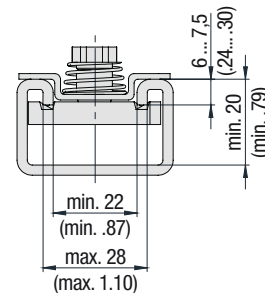
### Compatibility with Channel Rails

The STAUFF Channel Rail Adaptor, type CRA is suitable for various channel rails, including the following types:



HALFEN	HILTI	UNISTRUT®	STAUFF (Cushion Clamp Series)
HM 41/41	MQ-21, MQ-41, MQ-52, MQ-72	P1000, P1000T, P1000V, P1000VT, P1001	SCS-048-1-PL, SCS-048-1-GR
HZA 41/22	MQ-21U, MQ-41U, MQ-72U	P2000, P2000T	SCS-120-1-PL, SCS-120-1-GR
HZM 41/41	MQ-21D, MQ-41D, MQ-52-72D	P3003, P3003T, P3300V, P3300VT, P3301	See page A83 for technical information.
HZM 41/22		P4000, P4000T	
HL 41/41, HL 41/B2		P5000, P5000T, P5001, P5500, P5500T, P5501	

Consult STAUFF to check compatibility with additional types of channel rails.



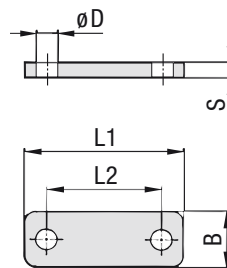
**Basic dimensional requirements for channel rails to be used with STAUFF Channel Rail Adaptors, type CRA**

### Recommended Bolt Lengths when using the Channel Rail Adaptor, Type CRA

Group STAUFF	DIN	Hexagon Head Bolts AS (used with Cover Plates DPAL or DPAS)		Socket Cap Screws IS (used without Cover Plates DPAL or DPAS)	
		Metric ISO thread	Unified coarse (UNC) thread	Metric ISO thread	Unified coarse (UNC) thread
3S	1	M10 x 40	3/8-16 UNC x 1-1/2	M10 x 25	3/8-16 UNC x 1
4S	2	M10 x 55	3/8-16 UNC x 2-1/4	M10 x 40	3/8-16 UNC x 1-1/2
5S	3	M10 x 65	3/8-16 UNC x 2-3/4	M10 x 50	3/8-16 UNC x 2
6S	4	M12 x 100	7/16-14 UNC x 3-3/4	M12 x 75	7/16-14 UNC x 3

Clamp assemblies including Channel Rail Adaptors, type CRA are supplied with the recommended bolt lengths by default. See page A36 for further information on ordering.

**Cover Plate for Single Clamps  
Type DPAL**



**Order Codes**

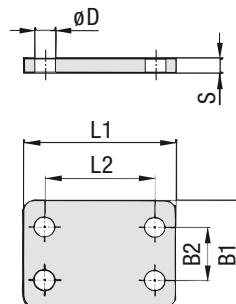
**Cover Plate** **\*DPAL\*3S\*W2**

- \* Cover Plate for Single Clamps **DPAL**
- \* STAUFF Group **3S**
- \* Material code
  - Carbon Steel, untreated **W1**
  - Carbon Steel, phosphated **W2**
  - Carbon Steel, zinc/nickel-plated **W3**
  - Stainless Steel V2A **W4**
  - 1.4301 / 1.4305 (AISI 304 / 303) **W4**
  - Stainless Steel V4A **W5**
  - 1.4401 / 1.4571 (AISI 316 / 316 Ti) **W5**

Group STAUFF	DIN	Dimensions (mm/in)					Order Codes (Standard Options)
		L1	L2	B	S	ØD	
3S	1	55	33	30	8	11	DPAL 3S W2
		2.16	1.30	1.18	.31	.43	
4S	2	70	45	30	8	11	DPAL 4S W2
		2.76	1.77	1.18	.31	.43	
5S	3	85	60	30	8	11	DPAL 5S W2
		3.35	2.36	1.18	.31	.43	
6S	4	115	90	45	10	14	DPAL 6S W2
		4.53	3.54	1.77	.39	.55	
7S	5	152	122	60	10	19	DPAL 7S W2
		5.98	4.80	2.36	.39	.75	
8S	6	206	168	80	15	22	DPAL 8S W1
		8.11	6.61	3.15	.59	.87	
9S	7	251	205	90	15	26	DPAL 9S W1
		9.88	8.07	3.54	.59	1.02	
10S	8	320	265	120	25	35	DPAL 10S W1
		12.60	10.43	4.72	.98	1.38	
11S	9	470	395	160	30	35	DPAL 11S W1
		18.50	15.55	6.30	1.18	1.38	
12S	10	630	534	180	30	35	DPAL 12S W1
		24.80	21.02	7.09	1.18	1.38	

Alternative materials and surface finishings are available upon request. Consult STAUFF for further information.

**Cover Plate for Double Clamps  
Type DPAS**



**Order Codes**

**Cover Plate** **\*DPAS\*3S\*W2**

- \* Cover Plate for Double Clamps **DPAS**
- \* STAUFF Group **3S**
- \* Material code
  - Carbon Steel, untreated **W1**
  - Carbon Steel, phosphated **W2**
  - Carbon Steel, zinc/nickel-plated **W3**
  - Stainless Steel V2A **W4**
  - 1.4301 / 1.4305 (AISI 304 / 303) **W4**
  - Stainless Steel V4A **W5**
  - 1.4401 / 1.4571 (AISI 316 / 316 Ti) **W5**

Group STAUFF	DIN	Dimensions (mm/in)					Order Codes (Standard Options)	
		L1	L2	B1	B2	S		ØD
3S	1	55	33	60	30,5	8	11	DPAS 3S W2
		2.16	1.30	2.36	1.20	.31	.43	
4S	2	70	45	60	30,5	8	11	DPAS 4S W2
		2.76	1.77	2.36	1.20	.31	.43	
5S	3	83	60	60	30,5	8	11	DPAS 5S W2
		3.27	2.36	2.36	1.20	.31	.43	
6S	4	115	90	90	46	10	14	DPAS 6S W2
		4.53	3.54	3.54	1.81	.39	.55	
7S	5	152	122	120	61	10	19	DPAS 7S W2
		5.98	4.80	4.72	2.40	.39	.75	
8S	6	206	168	160	81	15	22	DPAS 8S W1
		8.11	6.61	6.61	3.19	.59	.87	
9S	7	251	205	180	91	15	26	DPAS 9S W1
		9.88	8.07	7.09	3.58	.59	1.02	
10S	8	320	265	240	121	25	35	DPAS 10S W1
		12.60	10.43	9.45	4.78	.98	1.38	
11S	9	470	395	321	166	30	35	DPAS 11S W1
		18.50	15.55	12.64	6.54	1.18	1.38	
12S	10	630	534	361	186	30	35	DPAS 12S W1
		24.80	21.02	14.21	7.32	1.18	1.38	

Alternative materials and surface finishings are available upon request. Consult STAUFF for further information.

## Hexagon Head Bolt Type AS



### Hexagon Head Bolt AS

(according to DIN 931 / 933 or ANSI / ASME B18.2.1.)

Dimensions applicable only when used with Cover Plates DPAL or DPAS

Group STAUFF	DIN	Dimensions (mm / in) Thread G x L	Order Codes (Standard Options)
3S	1	M10 x 45	AS 3S M W1
		3/8-16 UNC x 1-3/4	AS 3S U W3*
4S	2	M10 x 60	AS 4S M W1
		3/8-16 UNC x 2-1/4	AS 4S U W3*
5S	3	M10 x 70	AS 5S M W1
		3/8-16 UNC x 2-3/4	AS 5S U W3*
6S	4	M12 x 100	AS 6S M W1
		7/16-14 UNC x 4	AS 6S U W3*
7S	5	M16 x 130	AS 7S M W1
		5/8-11 UNC x 5-1/4	AS 7S U W3*
8S	6	M20 x 190	AS 8S M W1
		3/4-10 UNC x 7-1/2	AS 8S U W1
9S	7	M24 x 220	AS 9S M W1
		7/8-9 UNC x 8-3/4	AS 9S U W1
10S	8	M30 x 300	AS 10S M W1
		1-1/8-7 UNC x 12	AS 10S U W1
11S	9	M30 x 450	AS 11S M W1
		1-1/4-7 UNC x 17-1/2	AS 11S U W1
12S	10	M30 x 560	AS 12S M W1
		1-1/4-7 UNC x 22	AS 12S U W1

All threaded parts are available with Metric ISO thread or unified coarse (UNC) thread according to dimension table. Alternative materials and surface finishings are available upon request. Consult STAUFF for further information.



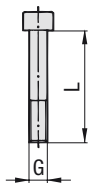
### Order Codes

#### Hexagon Head Bolt \*AS\*3S\*M\*W1

* Type of bolt	Hexagon Head Bolt (according to DIN 931 / 933 or ANSI / ASME B18.2.1.)	AS
* STAUFF Group		3S
* Thread code	Metric ISO thread	M
	Unified coarse (UNC) thread	U
* Material code	Carbon Steel, untreated	W1
	Carbon Steel, zinc/nickel-plated	W3
	Stainless Steel V2A	W4
	1.4301 / 1.4305 (AISI 304 / 303)	
	Stainless Steel V4A	W5
1.4401 / 1.4571 (AISI 316 / 316 Ti)		

\* Standard finishing option for Heavy Series group sizes 3S to 7S in North America is W3 (Carbon Steel, zinc/nickel-plated).

## Socket Cap Screw Type IS



### Socket Cap Screw IS

(according to ISO 4762 or ANSI / ASME B18.3)

Dimensions applicable only when used without Cover Plates

Group STAUFF	DIN	Dimensions (mm / in) Thread G x L	Order Codes (Standard Options)
3S	1	M10 x 30	IS 3S M W1
		3/8-16 UNC x 1	IS 3S U W3*
4S	2	M10 x 40	IS 4S M W1
		3/8-16 UNC x 1-3/4	IS 4S U W3*
5S	3	M10 x 50	IS 5S M W1
		3/8-16 UNC x 2	IS 5S U W3*
6S	4	M12 x 80	IS 6S M W1
		7/16-14 UNC x 3-1/4	IS 6S U W3*

All threaded parts are available with Metric ISO thread or unified coarse (UNC) thread according to dimension table. Alternative materials and surface finishings are available upon request. Consult STAUFF for further information.

\* Standard finishing option in North America is W3 (Carbon Steel, zinc/nickel-plated).

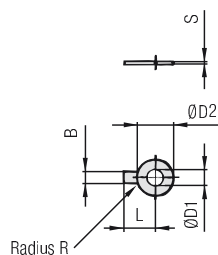


### Order Codes

#### Socket Cap Screw \*IS\*3S\*M\*W1

* Type of Bolt	Socket Cap Screw (according to ISO 4762 or ANSI / ASME B18.3)	IS
* STAUFF Group		3S
* Thread code	Metric ISO thread	M
	Unified coarse (UNC) thread	U
* Material code	Carbon Steel, untreated	W1
	Carbon Steel, zinc/nickel-plated	W3
	Stainless Steel V2A	W4
	1.4301 / 1.4305 (AISI 304 / 303)	
	Stainless Steel V4A	W5
1.4401 / 1.4571 (AISI 316 / 316 Ti)		

**Safety Washer**  
Type SI (DIN 93)



Safety Washer SI (according to DIN 93)

**Order Codes**

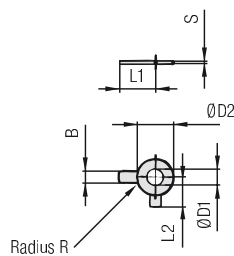
**Safety Washer** \*SI\*10,5\*DIN 93\*W3

- \* Safety Washer **SI**
- \* Exact inner diameter ØD1 (mm) **10,5**
- \* Type of washer Safety washer with 1 tab (according to DIN 93) **DIN 93**
- \* Material code Carbon Steel, zinc/nickel-plated **W3**

Group STAUFF	DIN	Dimensions (mm/in)						Order Codes (Standard Options)
		ØD1	B	ØD2	L	R	S	
3S	1	10,5	10	26	22	4	0,75	SI 10,5 DIN 93 W3
		.41	.39	1.02	.87	.16	.03	
4S	2	10,5	10	26	22	4	0,75	SI 10,5 DIN 93 W3
		.41	.39	1.02	.87	.16	.03	
5S	3	10,5	10	26	22	4	0,75	SI 10,5 DIN 93 W3
		.41	.39	1.02	.87	.16	.03	
6S	4	13	12	30	28	6	1	SI 13 DIN 93 W3
		.51	.47	1.18	1.10	.24	.04	
7S	5	17	15	36	32	6	1	SI 17 DIN 93 W3
		.67	.59	1.42	1.26	.24	.04	
8S	6	21	18	42	36	6	1	SI 21 DIN 93 W3
		.83	.71	1.65	1.42	.24	.04	
9S	7	25	20	50	42	6	1	SI 25 DIN 93 W3
		.98	.79	1.97	1.65	.24	.04	
10S	8	31	26	63	52	10	1,6	SI 31 DIN 93 W3
		1.22	1.02	2.48	2.05	.39	.06	
11S	9	31	26	63	52	10	1,6	SI 31 DIN 93 W3
		1.22	1.02	2.48	2.05	.39	.06	
12S	10	31	26	63	52	10	1,6	SI 31 DIN 93 W3
		1.22	1.02	2.48	2.05	.39	.06	

Safety Washers, type SI are used as locking devices to prevent Hexagon Head Bolts, type AS from loosening. Alternative materials and surface finishings are available upon request. Consult STAUFF for further information.

**Safety Washer**  
Type SI (DIN 463)



Safety Washer SI (according to DIN 463)

**Order Codes**

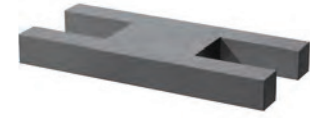
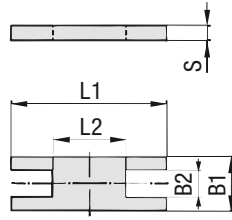
**Safety Washer** \*SI\*10,5\*DIN 463\*W3

- \* Safety Washer **SI**
- \* Exact inner diameter ØD1 (mm) **10,5**
- \* Type of washer Safety washer with 2 tabs (according to DIN 463) **DIN 463**
- \* Material code Carbon Steel, zinc/nickel-plated **W3**

Group STAUFF	DIN	Dimensions (mm/in)							Order Codes (Standard Options)
		ØD1	B	ØD2	L1	L2	R	S	
3S	1	10,5	10	21	22	13	4	0,75	SI 10,5 DIN 463 W3
		.41	.39	.83	.87	.51	.16	.03	
4S	2	10,5	10	21	22	13	4	1	SI 10,5 DIN 463 W3
		.41	.39	.83	.87	.51	.16	.04	
5S	3	10,5	10	21	22	13	4	1	SI 10,5 DIN 463 W3
		.41	.39	.83	.87	.51	.16	.04	
6S	4	13	12	24	28	15	6	1	SI 13 DIN 463 W3
		.51	.47	.94	1.10	.59	.24	.04	
7S	5	17	15	30	32	18	6	1	SI 17 DIN 463 W3
		.67	.59	1.18	1.26	.71	.24	.04	
8S	6	21	18	37	36	21	6	1	SI 21 DIN 463 W3
		.83	.71	1.46	1.42	.83	.24	.04	
9S	7	25	20	44	42	25	6	1	SI 25 DIN 463 W3
		.98	.79	1.73	1.65	.98	.24	.04	
10S	8	31	26	56	52	32	10	1,6	SI 31 DIN 463 W3
		1.22	1.02	2.20	2.05	1.26	.39	.06	
11S	9	31	26	56	52	32	10	1,6	SI 31 DIN 463 W3
		1.22	1.02	2.20	2.05	1.26	.39	.06	
12S	10	31	26	56	52	32	10	1,6	SI 31 DIN 463 W3
		1.22	1.02	2.20	2.05	1.26	.39	.06	

Safety Washers, type SI are used as locking devices to prevent Hexagon Head Bolts, type AS from loosening. Alternative materials and surface finishings are available upon request. Consult STAUFF for further information.

### Safety Locking Plate (for Use with Stacking Bolt AF) Type SIP



Group STAUFF	DIN	Dimensions (mm / in)					Order Codes (Standard Options)
		L1	L2	B1	B2	S	
3S	1	57	13	30	15,2	8	SIP 3S W2
		2.24	.51	1.18	.60	.31	
4S	2	70	26	30	15,2	8	SIP 4S W2
		2.76	1.02	1.18	.60	.31	
5S	3	85	40	30	15,2	8	SIP 5S W2
		3.35	1.57	1.18	.60	.31	
6S	4	116	68	45	17,2	10	SIP 6S W2
		4.57	2.68	1.77	.68	.39	
7S	5	153	96	60	22	10	SIP 7S W2
		6.02	3.78	2.36	.87	.39	
8S	6	206	130	80	28	15	SIP 8S W1
		8.11	5.12	3.15	1.10	.59	
9S	7	251	166	90	31	15	SIP 9S W1
		9.88	6.54	3.54	1.22	.59	
10S	8	317	205	120	49	25	SIP 10 S W1
		12.48	8.07	4.72	1.93	.98	

#### Order Codes

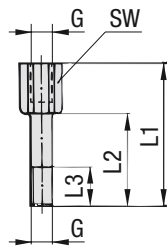
#### Safety Locking Plate

**\*SIP\*3S\*W2**

* Safety Locking Plate		SIP
* STAUFF Group		3S
* Material code	Carbon Steel, untreated	W1
	Carbon Steel, phosphated	W2
	Carbon Steel, zinc/nickel-plated	W3
	Stainless Steel V2A	W4
	1.4301 / 1.4305 (AISI 304 / 303)	W4
	Stainless Steel V4A	W5
	1.4401 / 1.4571 (AISI 316 / 316 Ti)	W5

Alternative materials and surface finishings are available upon request. Consult STAUFF for further information.

### Stacking Bolt (for Use with Safety Locking Plate SIP) Type AF



Group STAUFF	DIN	Dimensions (mm / in)					Order Codes (Standard Options)
		L1	L2	L3 min.	Hex	Thread G	
3S	1	49	25	15	15	M10	AF 3S M W2
		1.93	.98	.59	.59	3/8-16 UNC	AF 3S U W3*
4S	2	65	40	15	15	M10	AF 4S M W2
		2.56	1.57	.59	.59	3/8-16 UNC	AF 4S U W3*
5S	3	77	51	15	15	M10	AF 5S M W2
		3.03	2.01	.59	.59	3/8-16 UNC	AF 5S U W3*
6S	4	110	82	18	17	M12	AF 6S M W2
		4.33	3.23	.71	.67	7/16-14 UNC	AF 6S U W3*
7S	5	144	110	24	22	M16	AF 7S M W2
		5.67	4.33	.94	.87	5/8-11 UNC	AF 7S U W3*
8S	6	200	150	30	27	M20	AF 8S M W2
		7.87	5.91	1.18	1.06	3/4-10 UNC	AF 8S U W1*
9S	7	240	180	50	30	M24	AF 9S M W2
		9.45	7.09	1.97	1.18	7/8-9 UNC	AF 9S U W1*
10S	8	331	256	62	46	M30	AF 10S M W2
		13.03	10.08	2.44	1.81	1-1/8-7 UNC	AF 10S U W1*

#### Order Codes

#### Stacking Bolt

**\*AF\*3S\*M\*W2**

* Stacking Bolt		AF
* STAUFF Group		3S
* Thread code	Metric ISO thread	M
	Unified coarse (UNC) thread	U
* Material code	Carbon Steel, untreated	W1
	Carbon Steel, phosphated	W2
	Carbon Steel, zinc/nickel-plated	W3
	Stainless Steel V2A	W4
	1.4301 / 1.4305 (AISI 304 / 303)	W4
	Stainless Steel V4A	W5
	1.4401 / 1.4571 (AISI 316 / 316 Ti)	W5

All threaded parts are available with Metric ISO thread or unified coarse (UNC) thread according to dimension table. Alternative materials and surface finishings are available upon request. Consult STAUFF for further information.

\* Standard finishing option for Heavy Series group sizes 3S to 7S in North America is W3 (Carbon Steel, zinc/nickel-plated). Standard finishing option for Heavy Series group sizes 8S to 10S in North America is W1 (Carbon Steel, untreated).



① Type of Installation

Please select the type of installation (e.g. Weld Plates, Rail Nuts etc.) and add the corresponding Code to position ① of the order code for your clamp assembly.

Without Installation Equipment  
Code: **none**

Installation on Weld Plate

Weld Plate for Single Clamps  
Code: **SPAL**

Weld Plate for Double Clamps  
Code: **SPAS**

Elongated Weld Plate for Single Clamps  
Code: **SPAL/DUEB**

Elongated Weld Plate for Double Clamps  
Code: **SPAS/DUEB**

Installation on Mounting / Channel Rail

Mounting Rail Nut  
Code: **GMV** (for STAUFF Group 3S to 6S only)

Channel Rail Adaptor  
Code: **CRA** (for STAUFF Group 3S to 6S only)

② Group Size & Diameter

Please select the required group size and diameter and add the corresponding Code to position ② of the order code for your clamp assembly.

Group STAUFF (DIN)	Outside Diameter P / T / H (mm)	Availability of Clamp Body Materials & Designs Profiled			Code
		Design	Type H	Type RI	
3S (1)	6	●	●	○	3006
	6,4	●	●	○	3006,4
	8	●	●	○	3008
	9,5	●	●	○	3009,5
	10	●	●	○	3010
	12	●	●	○	3012
	12,7	●	●	○	3012,7
	13,5	●	●	○	3013,5
	14	●	●	○	3014
	15	●	●	○	3015
	16	●	●	○	3016
	17,2	●	●	○	3017,2
18	●	●	○	3018	
20	●	○	○	3020	

② Group Size & Diameter  
CONTINUATION

Group STAUFF (DIN)	Outside Diameter P / T / H (mm)	Availability of Clamp Body Materials & Designs Profiled			Code
		Design	Type H	Type RI	
4S (2)	6	○	○	●	4006
	8	○	○	●	4008
	10	○	○	●	4010
	12	○	○	●	4012
	12,7	○	○	●	4012,7
	14	○	○	●	4014
	15	○	○	●	4015
	16	○	○	●	4016
	17,2	○	○	●	4017,2
	18	○	○	●	4018
	19	●	●	●	4019
	20	○	●	○	4020
	21,3	●	●	○	4021,3
	22	●	●	○	4022
	25	●	●	○	4025
	25,4	●	●	○	4025,4
	26,9	●	●	○	4026,9
	28	●	●	○	4028
30	●	●	○	4030	
5S (3)	20	○	○	●	5020
	21,3	○	○	●	5021,3
	22	○	○	●	5022
	25	○	○	●	5025
	26,9	○	○	●	5026,9
	28	○	○	●	5028
	30	●	●	●	5030
	32	●	●	●	5032
	33,7	●	●	○	5033,7
	35	●	●	○	5035
	38	●	●	○	5038
	40	●	●	○	5040
41,3	●	●	○	5041,3	
42	●	●	○	5042	
6S (4)	32	○	○	●	6032
	33,7	○	○	●	6033,7
	35	○	○	●	6035
	38	●	●	○	6038
	38,7	○	○	●	6038,7
	40	○	○	●	6040
	42	●	●	●	6042
	44,5	●	●	○	6044,5
	45,5	○	○	●	6045,5
	48	○	○	●	6048
	48,3	●	●	○	6048,3
	50,8	●	●	○	6050,8
	51	○	○	●	6051
	53,4	○	○	●	6053,4
54	●	○	○	6054	

② Group Size & Diameter  
CONTINUATION

Group STAUFF (DIN)	Outside Diameter P / T / H (mm)	Availability of Clamp Body Materials & Designs Profiled			Code
		Design	Type H	Type RI	
6S (4)	55	●	●	○	6055
	56,4	○	○	●	6056,4
	57	●	●	○	6057
	57,2	●	●	○	6057,2
	60,3	●	●	○	6060,3
	63,5	●	●	○	6063,5
	65	●	●	○	6065
	70	●	●	○	6070
7S (5)	55	○	○	●	7055
	57	○	○	●	7057
	60	○	○	●	7060
	60,3	●	○	○	7060,3
	63,5	○	○	●	7063,5
	65	●	○	●	7065
	70	●	○	●	7070
	72	○	○	●	7072
	73	●	○	○	7073
	75	●	○	○	7075
	76	○	○	●	7076
	76,1	●	○	○	7076,1
80	●	○	○	7080	
82,5	●	○	○	7082,5	
88,9	●	○	○	7088,9	
8S (6)	80	○	○	●	8080
	88,9	●	○	●	8088,9
	100	●	○	○	8100
	102	●	○	●	8102
	108	●	○	○	8108
	114	●	○	○	8114
	127	●	○	○	8127
	133	●	○	○	8133
	114	○	○	●	9114
	127	●	○	○	9127
9S (7)	133	●	○	●	9133
	140	●	○	●	9140
	152	●	○	○	9152
	159	●	○	○	9159
	165	●	○	○	9165
	168	●	○	○	9168
	150	○	○	●	10150
10S (8)	165	○	○	●	10165
	168	●	○	●	10168
	172	○	○	●	10172
	177,8	●	○	○	10177,8
	193,7	●	○	○	10193,7
	203	●	○	○	10203
	216	●	○	○	10216
	219	●	○	○	10219
	219	●	○	○	11219
	11S (9)	273	●	○	○
324		●	○	○	11324
12S (10)	356	●	○	○	12356
	406	●	○	○	12406

● Standard Option

Additional outside diameters are available upon request. Please consult STAUFF for further information.

Please see pages A38 and A39 with detailed order examples for some of the most popular Heavy Series clamp assemblies.

### ③ Clamp Body Design & Material

Please select the design and material of your clamp body and add the corresponding **Code** to position ③ of the order code for your clamp assembly.

Please check the availability of the selected clamp body design and material according to the matrix table in ②.

#### Profiled Design

**Polypropylene**  
Code: **PP**

**Polyamide**  
Code: **PA**

**Thermoplastic Elastomer** (87 Shore-A)  
Code: **SA** (for STAUFF Group 3S to 6S only)

**Aluminium**  
Code: **AL**

#### Type H (Smooth)

**Polypropylene**  
Code: **PPH** (for STAUFF Group 3S to 6S only)

**Polyamide**  
Code: **PAH** (for STAUFF Group 3S to 6S only)

**Thermoplastic Elastomer** (87 Shore-A)  
Code: **SAH** (for STAUFF Group 3S to 6S only)

#### Type RI (with Rubber Insert)

**Polypropylene**  
Code: **PPR** (for STAUFF Group 4S to 10S only)

**Polyamide**  
Code: **PAR** (for STAUFF Group 4S to 10S only)

See pages A88 / A89 for material properties and technical information.

Please consult STAUFF for further details on fire-proof clamp body materials, tested and approved according to several international fire-protection standards.

### ④ Mounting & Fitting Combination

Please select the mounting and fitting combination (e.g. bolts, screws, cover plates etc.) and add the corresponding **Code** to position ④ of the order code for your clamp assembly.

#### Installation with Cover Plate and Bolts

**Cover Plate for Single Clamps DPAL with Hexagon Head Bolts AS**  
Code: **DPAL-AS**

**Cover Plate for Double Clamps DPAS with Hexagon Head Bolts AS**  
Code: **DPAS-AS**

**Cover Plate for Single Clamps DPAL with Socket Cap Screws IS\***  
Code: **DPAL-IS** (for STAUFF Group 3S to 6S only)

#### Installation with Locking Plate and Bolts

**Safety Locking Plate SIP with Stacking Bolts AF**  
Code: **SIP-AF**

#### Installation with Bolts only

**Socket Cap Screws IS**  
Code: **IS**

\* Special lengths of Socket Cap Screws IS required. For exact lengths, please see details of Hexagon Head Bolt, type AS (for use with Cover Plates DPAL or DPAS) on page A33.

### ⑤ Thread Type

Please select the required thread type and add the corresponding **Code** to position ⑤ of the order code for your clamp assembly.

**Metric ISO thread**  
Code: **M**

**Unified coarse (UNC) thread**  
Code: **U**

All threaded parts are available with Metric ISO thread or unified coarse (UNC) thread according to dimension table.

### ⑥ Material & Surface Finishing

Please select the required material & surface finishing of the metal parts and add the corresponding **Code** to position ⑥ of the order code for your clamp assembly.

Metal parts made of Carbon Steel, untreated **W1**

Metal parts made of Carbon Steel, phosphated **W2**

Metal parts made of Carbon Steel, zinc/nickel-plated **W3**

Metal parts made of Stainless Steel V2A 1.4301 / 1.4305 (AISI 304 / 303) **W4**

Metal parts made of Stainless Steel V4A 1.4401 / 1.4571 (AISI 316 / 316 Ti) **W5**

Weld Plate made of Carbon Steel, phosphated; Other metal parts made of Carbon Steel, zinc/nickel-plated **W10**

Weld Plate and Cover Plate made of Carbon Steel, phosphated; Bolts made of Carbon Steel, untreated **W12**

Mounting Rail Nuts made of Carbon Steel, zinc/nickel-plated; Cover Plate made of Carbon Steel, phosphated; Bolts made of Carbon Steel, untreated **W13**

Weld Plate / Cover Plate made of Carbon Steel, phosphated; Bolts made of Carbon Steel, zinc/nickel-plated **W15**

Mounting Rail Nuts made of Carbon Steel, zinc/nickel-plated; Cover Plate made of Carbon Steel, phosphated; Bolts made of Carbon Steel, zinc/nickel-plated **W16**

Safety Locking Plate made of Carbon Steel, phosphated; Bolts made of Carbon Steel, zinc/nickel-plated **W17**

Safety Locking Plate made of Carbon Steel, untreated; Bolts made of Carbon Steel, phosphated **W18**

Cover Plate made of Carbon Steel, phosphated; Bolts made of Carbon Steel, untreated **W19**

Individual combinations of alternative materials and surface finishings are available upon request. Consult STAUFF for further information.

### ⑦ Assembling & Kitting

If required, please select an additional assembling and kitting option and add the corresponding **Code** to the last position of the order code for your clamp assembly.

**Components supplied separately**  
Code: **none** (standard option)

**Components assembled**  
Code: **#A** (special option)

**Components packed in kits**  
Code: **#K** (special option)





- 2x **Hexagon Head Bolt**  
Surface: W1  
Thread: Metric
- 1x **Cover Plate for Single Clamps**  
Surface: W2
- 1x **Clamp Body** (two halves)  
STAUFF Group 3 S (DIN 1)  
O.D. 6 mm / .24 in  
Material: Polypropylene  
Profiled inside surface with tension clearance
- 1x **Weld Plate for Single Clamps**  
Surface: W2  
Thread: Metric

### Order Code

#### SPAL 3006 PP DPAL-AS M W12

W12 (STAUFF Group 3S to 7S) and W1 (STAUFF Group 8S to 12S) are the standard options for this type of installation.



- 4x **Hexagon Head Bolt**  
Surface: W1  
Thread: Metric
- 1x **Cover Plate for Double Clamps**  
Surface: W2
- 2x **Clamp Body** (four halves)  
STAUFF Group 3 S (DIN 1)  
O.D. 6 mm / .24 in  
Material: Polypropylene  
Profiled inside surface with tension clearance
- 1x **Weld Plate for Double Clamps**  
Surface: W2  
Thread: Metric

### Order Code

#### SPAS 3006 PP DPAS-AS M W12

W12 (STAUFF Group 3S to 7S) and W1 (STAUFF Group 8S to 12S) are the standard options for this type of installation.



- 2x **Hexagon Head Bolt**  
Surface: W1  
Thread: Metric
- 1x **Cover Plate for Single Clamps**  
Surface: W2
- 1x **Clamp Body** (two halves)  
STAUFF Group 3 S (DIN 1)  
O.D. 6 mm / .24 in  
Material: Polypropylene  
Profiled inside surface with tension clearance
- 1x **Elongated Weld Plate for Single Clamps**  
Surface: W2  
Thread: Metric

### Order Code

#### SPAL/DUEB 3006 PP DPAL-AS M W12

W12 (STAUFF Group 3S to 7S) and W1 (STAUFF Group 8S to 12S) are the standard options for this type of installation.



- 4x **Hexagon Head Bolt**  
Surface: W1  
Thread: Metric
- 1x **Cover Plate for Double Clamps**  
Surface: W2
- 2x **Clamp Body** (four halves)  
STAUFF Group 3 S (DIN 1)  
O.D. 6 mm / .24 in  
Material: Polypropylene  
Profiled inside surface with tension clearance
- 1x **Elongated Weld Plate for Double Clamps**  
Surface: W2  
Thread: Metric

### Order Code

#### SPAS/DUEB 3006 PP DPAS-AS M W12

W12 (STAUFF Group 3S to 7S) and W1 (STAUFF Group 8S to 12S) are the standard options for this type of installation.



- 2x **Socket Cap Screw**  
Surface: W1  
Thread: Metric
- 1x **Clamp Body** (two halves)  
STAUFF Group 3 S (DIN 1)  
O.D. 6 mm / .24 in  
Material: Polypropylene  
Profiled inside surface with tension clearance
- 1x **Weld Plate for Single Clamps**  
Surface: W2  
Thread: Metric

### Order Code

#### SPAL 3006 PP IS M W12

W12 is the standard option for this type of installation. Available up to STAUFF Group 6S (DIN Group 4) only.



- 2x **Socket Cap Screw**  
Surface: W1  
Thread: Metric
- 1x **Clamp Body** (two halves)  
STAUFF Group 3 S (DIN 1)  
O.D. 6 mm / .24 in  
Material: Polypropylene  
Profiled inside surface with tension clearance
- 1x **Elongated Weld Plate for Single Clamps**  
Surface: W2  
Thread: Metric

### Order Code

#### SPAL/DUEB 3006 PP IS M W12

W12 is the standard option for this type of installation. Available up to STAUFF Group 6S (DIN Group 4) only.



- 2x **Hexagon Head Bolt**  
Surface: W1  
Thread: Metric
- 1x **Cover Plate for Single Clamps**  
Surface: W2
- 1x **Clamp Body** (two halves)  
STAUFF Group 3S (DIN 1)  
O.D. 6 mm / .24 in  
Material: Polypropylene  
Profiled inside surface with tension clearance
- 2x **Mounting Rail Nut**  
Surface: W3  
Thread: Metric

**Order Code** (Mounting Rail STSV not included.)

### GMV 3006 PP DPAL-AS M W13

W13 is the standard option for this type of installation.  
Available up to STAUFF Group 6S (DIN Group 4) only.



- 2x **Socket Cap Screw**  
Surface: W1  
Thread: Metric
- 1x **Clamp Body** (two halves)  
STAUFF Group 3S (DIN 1)  
O.D. 6 mm / .24 in  
Material: Polypropylene  
Profiled inside surface with tension clearance
- 2x **Mounting Rail Nut**  
Surface: W3  
Thread: Metric

**Order Code** (Mounting Rail STSV not included.)

### GMV 3006 PP IS M W13

W13 is the standard option for this type of installation.  
Available up to STAUFF Group 6S (DIN Group 4) only.



- 2x **Hexagon Head Bolt**  
Surface: W1  
Thread: Metric
- 1x **Cover Plate for Single Clamps**  
Surface: W2
- 1x **Clamp Body** (two halves)  
STAUFF Group 3S (DIN 1)  
O.D. 6 mm / .24 in  
Material: Polypropylene  
Profiled inside surface with tension clearance

**Order Code**

### 3006 PP DPAL-AS M W19

W19 (STAUFF Group 3S to 7S) and W1 (STAUFF Group 8S to 12S) are the standard options for this type of installation.



- 2x **Stacking Bolt**  
Surface: W2  
Thread: Metric
- 1x **Safety Locking Plate**  
Surface: W2
- 1x **Clamp Body** (two halves)  
STAUFF Group 3S (DIN 1)  
O.D. 6 mm / .24 in  
Material: Polypropylene  
Profiled inside surface with tension clearance

**Order Code**

### 3006 PP SIP-AF M W2

W2 (STAUFF Group 3S to 7S) and W18 (STAUFF Group 8S to 10S) are the standard options for this type of installation. Available up to STAUFF Group 10S (DIN Group 8) only.

### Thread codes

All threaded parts are available with Metric ISO thread or unified coarse (UNC) thread according to dimension table.

Metric ISO thread	<b>M</b>
Unified coarse (UNC) thread	<b>U</b>

### Material codes

The below listed material codes describe the materials and surface finishings of metal parts that are most relevant for Heavy Series clamp assemblies. Individual combinations of alternative materials and surface finishings are available upon request. Consult STAUFF for further information.

Metal parts made of Carbon Steel, untreated	<b>W1</b>
Metal parts made of Carbon Steel, phosphated	<b>W2</b>
Metal parts made of Carbon Steel, zinc/nickel-plated	<b>W3</b>
Metal parts made of Stainless Steel V2A: 1.4301 / 1.4305 (AISI 304 / 303)	<b>W4</b>
Metal parts made of Stainless Steel V4A: 1.4401 / 1.4571 (AISI 316 / 316 Ti)	<b>W5</b>
Weld Plate made of Carbon Steel, phosphated; Other metal parts made of Carbon Steel, zinc/nickel-plated	<b>W10</b>
Weld Plate and Cover Plate made of Carbon Steel, phosphated; Bolts made of Carbon Steel, untreated	<b>W12</b>
Mounting Rails Nut made of Carbon Steel, zinc/nickel-plated; Cover Plate made of Carbon Steel, phosphated; Bolts made of Carbon Steel, untreated	<b>W13</b>
Weld Plate and Cover Plate made of Carbon Steel, phosphated; Bolts made of Carbon Steel, zinc/nickel-plated	<b>W15</b>
Mounting Rail Nuts made of Carbon Steel, zinc/nickel-plated; Cover Plate made of Carbon Steel, phosphated; Bolts made of Carbon Steel, zinc/nickel-plated	<b>W16</b>
Safety Locking Plate made of Carbon Steel, phosphated; Bolts made of Carbon Steel, zinc/nickel-plated	<b>W17</b>
Safety Locking Plate made of Carbon Steel, untreated; Bolts made of Carbon Steel, phosphated	<b>W18</b>
Cover Plate made of Carbon Steel, phosphated; Bolts made of Carbon Steel, untreated	<b>W19</b>

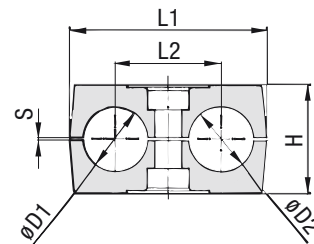
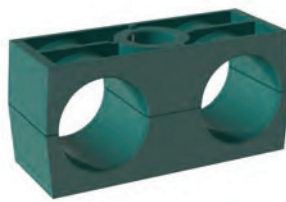
## Clamp Body ▪ Profiled Design

Profiled Inside Surface with Tension Clearance



## Clamp Body ▪ Type H

Smooth Inside Surface w/o Tension Clearance



### Order Codes

#### Clamp Body

**\*1\*06/06\*PP**

One clamp body is consisting of two clamp halves.

- \* 1<sup>st</sup> Part of STAUFF Group
- \* Exact outside diameters Ø D1 / Ø D2 (mm)
- \* Material code (see below)

**1**  
**06/06**  
**PP**

### Designs & Standard Materials



#### Polypropylene ▪ Profiled Design

Profiled inside surface with tension clearance  
Colour: Green  
Material code: **PP**



#### Polypropylene ▪ Type H

Smooth inside surface without tension clearance  
Colour: Green  
Material code: **PPH**



#### Polyamide ▪ Profiled Design

Profiled inside surface with tension clearance  
Colour: Black  
Material code: **PA**



#### Polyamide ▪ Type H

Smooth inside surface without tension clearance  
Colour: Black  
Material code: **PAH**

See pages A88 / A89 for properties and technical information.

### Special Materials

Please consult STAUFF for further details on fire-proof clamp body materials, tested and approved according to several international fire-protection standards.

See pages A90 / A91 for properties and technical information.

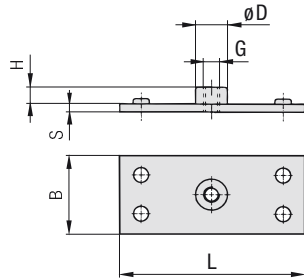
### Product Features

- Proven, tested and trusted product in various markets
- Profiled design recommended for the safe installation of rigid pipes and tubes; type H recommended for the safe installation of hoses and cables
- Available for all commonly used pipe and tube outside diameters
- Environmental protection due to vibration/noise reducing design
- Excellent weathering resistance, even under extreme conditions

Group	STAUFF	DIN	Outside Diameter		Nominal Bore		Order Codes (2 Clamp Halves) (*** = Material)	Dimensions (mm / in)								
			Pipe / Tube / Hose Ø D1 / Ø D2 (mm) (in)	(mm) (in)	Pipe (in)	Copper Tube ASTM B88 (in)		L1	L2	H	S min.	TypeH H	Width			
1D	1	6					106/06 ***									
		6,4	1/4				106,4/06,4 ***									
		8	5/16				108/08 ***	36	20	27	0,6	26,5	30			
		9,5	3/8		1/4		109,5/09,5 ***	1.42	.79	1.06	.02	1.04	1.18			
		10		1/8			110/10 ***									
		12					112/12 ***									
2D	2	12,7	1/2		3/8		212,7/12,7 ***									
		13,5		1/4			213,5/13,5 ***									
		14					214/14 ***									
		15					215/15 ***	53	29	27	0,7	26	30			
		16	5/8		1/2		216/16 ***	2.09	1.14	1.06	.03	1.02	1.18			
		17,2		3/8			217,2/17,2 ***									
3D	3	18					218/18 ***									
		19	3/4				319/19 ***									
		20					320/20 ***									
		21,3		1/2			321,3/21,3 ***	67	36	37	0,7	36,5	30			
		22			3/4		322/22 ***	2.64	1.42	1.46	.03	1.44	1.18			
		25					325/25 ***									
4D	4	25,4	1				325,4/25,4 ***									
		26,9		3/4			426,9/26,9 ***									
		28					428/28 ***	80	45	40	0,7	38	30			
					430/30 ***	3.15	1.77	1.57	.03	1.46	1.18					
5D	5	30					532/32 ***									
		32	1-1/4				533,7/33,7 ***									
		33,7		1			535/35 ***	106	56	53	0,7	52	30			
		35			1-1/4		538/38 ***	4.17	2.20	2.09	.03	2.04	1.18			
		38	1-1/2				540/40 ***									
		40					542/42 ***									

Additional outside diameters and combinations of different outside diameters are available upon request.  
Please consult STAUFF for further information.

### Single Weld Plate Type SP



Group STAUFF	DIN	Dimensions (mm/in)					Thread G	Order Codes (Standard Options)
		L	B	S	H	ØD		
1D	1	37	30	3	6,5	12	M6	SP 1D M W2
		1.46	1.18	.12	.26	.47	1/4-20 UNC	SP 1D U W2
2D	2	55	30	5	6	14	M8	SP 2D M W2
		2.17	1.18	.20	.24	.55	5/16-18 UNC	SP 2D U W2
3D	3	70	30	5	6	14	M8	SP 3D M W2
		2.76	1.18	.20	.24	.55	5/16-18 UNC	SP 3D U W2
4D	4	85	30	5	6	14	M8	SP 4D M W2
		3.35	1.18	.20	.24	.55	5/16-18 UNC	SP 4D U W2
5D	5	110	30	5	6	14	M8	SP 5D M W2
		4.33	1.18	.20	.24	.55	5/16-18 UNC	SP 5D U W2

All threaded parts are available with Metric ISO thread or unified coarse (UNC) thread according to dimension table. Alternative materials and surface finishings are available upon request. Consult STAUFF for further information.

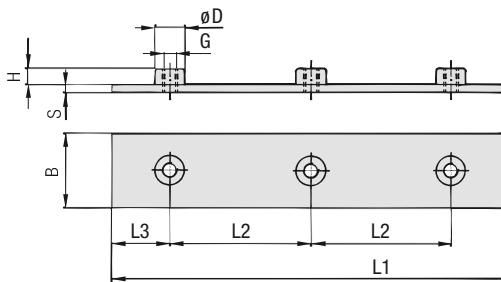
#### Order Codes

##### Weld Plate

**\*SP\*1D\*M\*W2**

* Single Weld Plate		SP
* STAUFF Group		1D
* Thread code	Metric ISO thread	M
	Unified coarse (UNC) thread	U
* Material code	Carbon Steel, untreated	W1
	Carbon Steel, phosphated	W2
	Carbon Steel, zinc/nickel-plated	W3
	Stainless Steel V2A	W4
	1.4301 / 1.4305 (AISI 304 / 303)	
	Stainless Steel V4A	W5
	1.4401 / 1.4571 (AISI 316 / 316 Ti)	

### Group Weld Plate Type RAP



Group STAUFF	DIN	Dimensions (mm/in)					Thread G	Order Codes (Standard Options)		
		L1	L2	L3	B	S				
1D	1	196	40	18	30	3	6,5	12	M6	RAP 1D/40/5 M W1
		7.72	1.57	.71	1.18	.12	.26	.47	1/4-20 UNC	RAP 1D/40/5 U W1
2D	2	288	58	28	30	5	6	14	M8	RAP 2D/58/5 M W1
		11.34	2.28	1.10	1.18	.20	.24	.55	5/16-18 UNC	RAP 2D/58/5 U W1
3D	3	358	72	35	30	5	6	14	M8	RAP 3D/72/5 M W1
		14.09	2.83	1.37	1.18	.20	.24	.55	5/16-18 UNC	RAP 3D/72/5 U W1
4D	4	445	90	42	30	5	6	14	M8	RAP 4D/90/5 M W1
		17.52	3.54	1.65	1.18	.20	.24	.55	5/16-18 UNC	RAP 4D/90/5 U W1
5D	5	558	112	55	30	5	6	14	M8	RAP 5D/112/5 M W1
		21.97	4.41	2.16	1.18	.20	.24	.55	5/16-18 UNC	RAP 5D/112/5 U W1

All threaded parts are available with Metric ISO thread or unified coarse (UNC) thread according to dimension table. Alternative materials and surface finishings are available upon request. Consult STAUFF for further information.

#### Order Codes

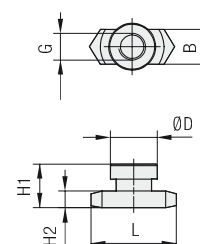
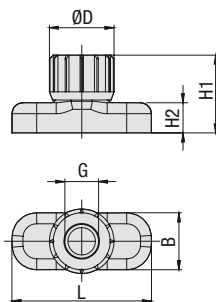
##### Weld Plate

**\*RAP\*1D/40/5\*M\*W1**

* Group Weld Plate		RAP
* STAUFF Group		1D
* Pipe Center Spacing L2 (mm)		40
* Number of Clamps		5
* Thread code	Metric ISO thread	M
	Unified coarse (UNC) thread	U
* Material code	Carbon Steel, untreated	W1
	Carbon Steel, phosphated	W2
	Carbon Steel, zinc/nickel-plated	W3
	Stainless Steel V2A	W4
	1.4301 / 1.4305 (AISI 304 / 303)	
	Stainless Steel V4A	W5
	1.4401 / 1.4571 (AISI 316 / 316 Ti)	

### Hexagon Rail Nut

Type SM / SMG (for Use with Mounting Rail TS)



STAUFF Group 1D

STAUFF Group 2D to 5D

STAUFF Group 1D

STAUFF Group 2D to 5D

#### Order Codes

Hexagon Rail Nut **\*SM\*1-8/1D\*M\*W3**

\* Hexagon Rail Nut

Carbon Steel **SM**  
Stainless Steel **SMG**

\* STAUFF Group 1D (DIN Group 1) **1-8/1D**  
2D to 5D (DIN Group 2 to 5) **2-5D**

\* Thread code Metric ISO thread **M**  
Unified coarse (UNC) thread **U**

\* Material code Carbon Steel, zinc/nickel-plated **W3**  
Stainless Steel V2A **W4**  
1.4301 / 1.4305 (AISI 304 / 303)  
Stainless Steel V4A **W5**  
1.4401 / 1.4571 (AISI 316 / 316 Ti)

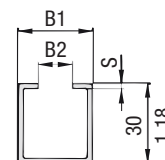
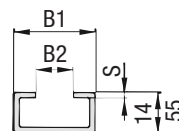
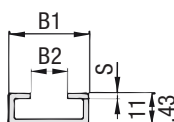
Group STAUFF	DIN	Dimensions (mm/in)						Order Codes (Standard Options)
		Thread G	L	B	H1	H2	ØD	
1D	1	M6	25,5	10,4	14,2	5,5	12	SM 1-8/1D M W3
		1/4-20 UNC	1.00	.41	.56	.22	.47	SM 1-8/1D U W3
2D	2							
3D	3							
4D	4	M8	25,5	10,4	13	5	14	SM 2-5D M W3
		5/16-18 UNC	1.00	.41	.51	.20	.55	SM 2-5D U W3
5D	5							

The Hexagon Rail Nut, type SM 1-8/1D is also suitable for Standard Series, STAUFF Group 1 to 8.

All threaded parts are available with Metric ISO thread or unified coarse (UNC) thread according to dimension table. Alternative materials and surface finishings are available upon request. Consult STAUFF for further information.

### Mounting Rail

Type TS (for Use with Hexagon Rail Nut SM / SMG)



Mounting Rail TS 11

Mounting Rail TS 14

Mounting Rail TS 30

#### Order Codes

Mounting Rail **\*TS\*11\*-1\*W1**

\* Mounting Rail

**TS**

\* Height of rail 11 mm / .43 in **11**  
14 mm / .55 in **14**  
30 mm / 1.18 in **30**

\* Length of rail 1 m / 3.28 ft **-1M**  
2 m / 6.56 ft **-2M**

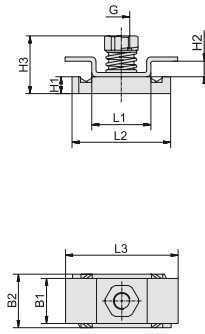
Alternative lengths available upon request. Consult STAUFF for further information.

\* Material code Carbon Steel, untreated **W1**  
Carbon Steel, zinc/nickel-plated **W3**  
Stainless Steel V2A **W4**  
1.4301 / 1.4305 (AISI 304 / 303)  
Stainless Steel V4A **W5**  
1.4401 / 1.4571 (AISI 316 / 316 Ti)

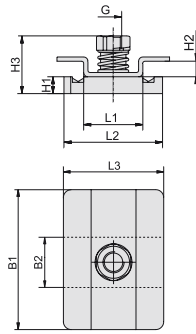
Group STAUFF	DIN	Dimensions (mm/in)			Order Codes (Standard Options)	
		L	B	H1	Length of Rail: 1 m / 3.28ft	Length of Rail: 2 m / 6.56ft
1D	1				Height 11 mm / .43 in <b>TS 11-1M W1</b>	Height 11 mm / .43 in <b>TS 11-2M W1</b>
2D	2					
3D	3	28 1.10	11 .43	2 .08	Height 14 mm / .55 in <b>TS 14-1M W1</b>	Height 14 mm / .55 in <b>TS 14-2M W1</b>
4D	4					
5D	5				Height 30 mm / 1.18 in <b>TS 30-1M W1</b>	Height 30 mm / 1.18 in <b>TS 30-2M W1</b>

Mounting Rails, type TS 11/14/30 are suitable for all Twin Series and Standard Series group sizes.

Alternative materials and surface finishings are available upon request. Consult STAUFF for further information.



STAUFF Group 1D



STAUFF Group 2-3D / 4-5D



## Channel Rail Adaptor (for Use with Various Channel Rails) Type CRA

Group STAUFF	DIN	Dimensions (mm/in)									Order Codes (Standard Options)
		Thread G	L1	L2	L3	B1	B2	H1	H2	H3	
1D	1	M6	21	35	40	16	19	6	5,5	20,5	CRA 1-8/1D M W3
		1/4-20 UNC	.83	1.38	1.57	.63	.75	.24	.22	.81	CRA 1-8/1D U W3
2D	2	M8	21	35	38	53	19	9	5,5	23,5	CRA 2-3D M W3
3D	3	5/16-18 UNC	.83	1.38	1.50	2.09	.75	.35	.22	.93	CRA 2-3D U W3
4D	4	M8	21	35	38	80	19	9	5,5	23,5	CRA 4-5D M W3
5D	5	5/16-18 UNC	.83	1.38	1.50	3.15	.75	.3	.22	.93	CRA 4-5D U W3

### Order Codes

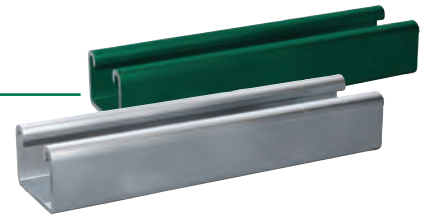
#### Adaptor

**\*CRA\*1-8/1D\*M\*W3**

* Channel Rail Adaptor	<b>CRA</b>
* STAUFF Group	1D (DIN Group 1) <b>1-8/1D</b> 2D to 3D (DIN Group 2 to 3) <b>2-3D</b> 4D to 5D (DIN Group 4 to 5) <b>4-5D</b>
* Thread code	Metric ISO thread <b>M</b> Unified coarse (UNC) thread <b>U</b>
* Material code	Carbon Steel, zinc/nickel-plated <b>W3</b> Stainless Steel V4A <b>W5</b> 1.4401 / 1.4571 (AISI 316 / 316 Ti)

The Channel Rail Adaptor, type CRA 1-8/1D is also suitable for Standard Series, STAUFF Group 1 to 8.

All threaded parts are available with Metric ISO thread or unified coarse (UNC) thread according to dimension table. Alternative materials and surface finishings are available upon request. Consult STAUFF for further information.

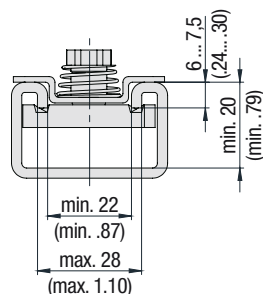


### Compatibility with Channel Rails

The STAUFF Channel Rail Adaptor, type CRA, is suitable for various channel rails, including the following types:

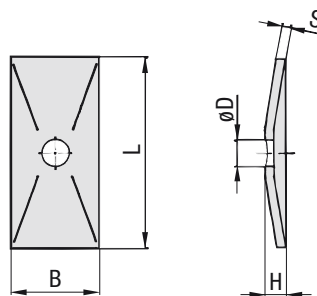
HALFEN	HILTI	UNISTRUT®	STAUFF (Cushion Clamp Series)
HM 41/41	MQ-21, MQ-41, MQ-52, MQ-72	P1000, P1000T, P1000V, P1000VT, P1001	SCS-048-1-PL, SCS-048-1-GR
HZA 41/22	MQ-21U, MQ-41U, MQ-72U	P2000, P2000T	SCS-120-1-PL, SCS-120-1-GR
HZM 41/41	MQ-21D, MQ-41D, MQ-52-72D	P3003, P3003T, P3300V, P3300VT, P3301	See page A83 for technical information.
HZM 41/22		P4000, P4000T	
HL 41/41, HL 41/B2		P5000, P5000T, P5001, P5500, P5500T, P5501	

Consult STAUFF to check compatibility with additional types of channel rails.



#### Basic dimensional requirements for channel rails to be used with STAUFF Channel Rail Adaptors, type CRA

## Cover Plate Type GD



### Order Codes

#### Cover Plate

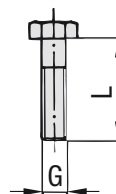
**\*GD\*1D\*W3**

* Cover Plate		<b>GD</b>
* STAUFF Group		<b>1D</b>
* Material code	Carbon Steel, zinc/nickel-plated	<b>W3</b>
	Stainless Steel V2A	<b>W4</b>
	1.4301 / 1.4305 (AISI 304 / 303)	<b>W4</b>
	Stainless Steel V4A	<b>W5</b>
	1.4401 / 1.4571 (AISI 316 / 316 Ti)	<b>W5</b>

Group STAUFF	DIN	Dimensions (mm/in)					Order Codes (Standard Options)
		L	B	H	S	ØD	
1D	1	34	30	7	3	7	GD 1D W3
		1.34	1.18	.28	.12	.28	
2D	2	52	30	7	3	9	GD 2D W3
		2.05	1.18	.28	.12	.35	
3D	3	65	30	7	3	9	GD 3D W3
		2.56	1.18	.28	.12	.35	
4D	4	79	30	7	3	9	GD 4D W3
		3.11	1.18	.28	.12	.35	
5D	5	102	30	7	3	9	GD 5D W3
		4.02	1.18	.28	.12	.35	

Alternative materials and surface finishings are available upon request. Consult STAUFF for further information.

## Hexagon Head Bolt Type AS



### Hexagon Head Bolt AS

(according to DIN 931 / 933 or ANSI / ASME B18.2.1.)

Dimensions applicable only when used with Cover Plate GD

### Order Codes

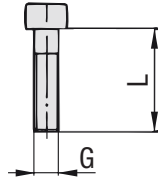
#### Hexagon Head Bolt

**\*AS\*1D\*M\*W3**

* Type of bolt	Hexagon Head Bolt (according to DIN 931 / 933 or ANSI / ASME B18.2.1.)	<b>AS</b>
* STAUFF Group		<b>1D</b>
* Thread code	Metric ISO thread	<b>M</b>
	Unified coarse (UNC) thread	<b>U</b>
* Material code	Carbon Steel, zinc/nickel-plated	<b>W3</b>
	Stainless Steel V2A	<b>W4</b>
	1.4301 / 1.4305 (AISI 304 / 303)	<b>W4</b>
	Stainless Steel V4A	<b>W5</b>
	1.4401 / 1.4571 (AISI 316 / 316 Ti)	<b>W5</b>

Group STAUFF	DIN	Dimensions (mm/in)		Order Codes (Standard Options)
		Thread G x L		
1D	1	M6 x 35		AS 1D M W3
		1/4-20 UNC x 1-3/8		AS 1D U W3
2D	2	M8 x 35		AS 2D M W3
		5/16-18 UNC x 1-3/8		AS 2D U W3
3D	3	M8 x 45		AS 3D M W3
		5/16-18 UNC x 1-3/4		AS 3D U W3
4D	4	M8 x 50		AS 4D M W3
		5/16-18 UNC x 2		AS 4D U W3
5D	5	M8 x 60		AS 5D M W3
		5/16-18 UNC x 2-1/2		AS 5D U W3

All threaded parts are available with Metric ISO thread or unified coarse (UNC) thread according to dimension table. Alternative materials and surface finishings are available upon request. Consult STAUFF for further information.

**Socket Cap Screw  
Type IS**


**Socket Cap Screw IS**  
(according to ISO 4762 or ANSI / ASME B18.3)  
Dimensions applicable only when used with Cover Plate GD



Group STAUFF	DIN	Dimensions (mm/in) Thread G x L	Order Codes (Standard Options)
1D	1	M6 x 35	IS 1D M W3
		1/4-20 UNC x 1-3/8	IS 1D U W3
2D	2	M8 x 35	IS 2D M W3
		5/16-18 UNC x 1-3/8	IS 2D U W3
3D	3	M8 x 45	IS 3D M W3
		5/16-18 UNC x 1-3/4	IS 3D U W3
4D	4	M8 x 50	IS 4D M W3
		5/16-18 UNC x 2	IS 4D U W3
5D	5	M8 x 60	IS 5D M W3
		5/16-18 UNC x 2-1/2	IS 5D U W3

**Order Codes**
**Hexagon Head Bolt**
**\*IS\*1D\*M\*W3**

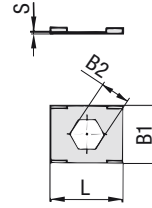
* Type of bolt	Socket Cap Screw (according to ISO 4762 or ANSI / ASME B18.3)	<b>IS</b>
* STAUFF Group		<b>1D</b>
* Thread code	Metric ISO thread	<b>M</b>
	Unified coarse (UNC) thread	<b>U</b>
* Material code	Carbon Steel, zinc/nickel-plated	<b>W3</b>
	Stainless Steel V2A	<b>W4</b>
	1.4301 / 1.4305 (AISI 304 / 303)	
	Stainless Steel V4A	<b>W5</b>
	1.4401 / 1.4571 (AISI 316 / 316 Ti)	

All threaded parts are available with Metric ISO thread or unified coarse (UNC) thread according to dimension table.  
Alternative materials and surface finishings are available upon request. Consult STAUFF for further information.



## Safety Locking Plate

Type **SI** (for Use with Stacking Bolt AF)



Safety Locking Plate **SI**

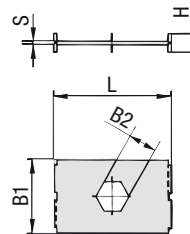
Order Codes	
<b>Safety Locking Plate</b>	<b>*SI*1D*W3</b>
* Safety Locking Plate	<b>SI</b>
* STAUFF Group	1D (DIN Group 1) 2D to 5D (DIN Group 2 to 5)
	<b>1D</b> <b>2-5D</b>
* Material code	Carbon Steel, zinc/nickel-plated
	<b>W3</b>
	Stainless Steel V2A
	1.4301 / 1.4305 (AISI 304 / 303)
	<b>W4</b>
	Stainless Steel V4A
	1.4401 / 1.4571 (AISI 316 / 316 Ti)
	<b>W5</b>

Group STAUFF	DIN	Dimensions ( <sup>m</sup> / <sub>in</sub> )				Order Codes (Standard Options)
		L	B1	B2	S	
1D	1	27	22	11,2	0,5	SI 1D W3
		1.06	.86	.44	.02	
2D	2	27	22	12,2	0,5	SI 2-5D W3
3D	3					
4D	4	1.06	.86	.48	.02	
5D	5					

Alternative materials and surface finishings are available upon request. Consult STAUFF for further information.

## Safety Locking Plate

Type **SIV** (for Use with Stacking Bolt AF)



Safety Locking Plate **SIV**  
(Prevents Upper Clamp from Turning)

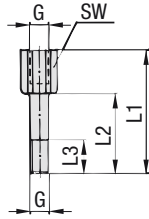
Order Codes	
<b>Safety Locking Plate</b>	<b>*SIV*1D*W3</b>
* Safety Locking Plate	<b>SIV</b>
* STAUFF Group	1D (DIN Group 1) 2D to 3D (DIN Group 2 to 3)
	<b>1D</b> <b>2-3D</b>
* Material code	Carbon Steel, zinc/nickel-plated
	<b>W3</b>
	Stainless Steel V2A
	1.4301 / 1.4305 (AISI 304 / 303)
	<b>W4</b>
	Stainless Steel V4A
	1.4401 / 1.4571 (AISI 316 / 316 Ti)
	<b>W5</b>

Group STAUFF	DIN	Dimensions ( <sup>m</sup> / <sub>in</sub> )					Order Codes (Standard Options)
		L	B1	B2	S	H	
1D	1	27	28	11,1	1	7	SIV 1D W3
		1.06	1.10	.44	.04	.27	
2D	2	45	28	12,1	1	7	SIV 2-3D W3
3D	3	1.77	1.10	.48	.04	.27	

Alternative materials and surface finishings are available upon request. Consult STAUFF for further information.

**Stacking Bolt**

(for Use with Safety Locking Plates SI / SIV) Type AF

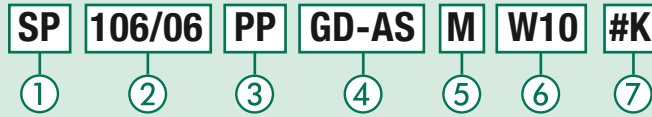


Group STAUFF	DIN	Dimensions (mm / in)					Order Codes (Standard Options)
		Thread G	L1	L2	L3 min.	Hex	
1D	1	M6	34	20	12	11	AF 1D M W3
		1/4-20 UNC	1.33	.78	.47	.43	AF 1D U W3
2D	2	M8	33	20	12	12	AF 2D M W3
		5/16-18 UNC	1.30	.78	.47	.47	AF 2D U W3
3D	3	M8	44	29	12	12	AF 3D M W3
		5/16-18 UNC	1.73	1.14	.47	.47	AF 3D U W3
4D	4	M8	49	34	12	12	AF 4D M W3
		5/16-18 UNC	1.92	1.33	.47	.47	AF 4D U W3
5D	5	M8	61	46	12	12	AF 5D M W3
		5/16-18 UNC	2.40	1.81	.47	.47	AF 5D U W3

**Order Codes**
**Stacking Bolt**
**\*AF\*1D\*M\*W3**

* Stacking Bolt		AF
* STAUFF Group		1D
* Thread code	Metric ISO thread	M
	Unified coarse (UNC) thread	U
* Material code	Carbon Steel, zinc/nickel-plated	W3
	Stainless Steel V2A	W4
	1.4301 / 1.4305 (AISI 304 / 303)	
	Stainless Steel V4A	W5
	1.4401 / 1.4571 (AISI 316 / 316 Ti)	

All threaded parts are available with Metric ISO thread or unified coarse (UNC) thread according to dimension table. Alternative materials and surface finishings are available upon request. Consult STAUFF for further information.



Please see page A49 with detailed order examples for some of the most popular Twin Series clamp assemblies.

## ① Type of Installation

Please select the type of installation (e.g. weld plates, rail nuts, etc.) and add the corresponding Code to position ① of the order code for your clamp assembly.

**Without Installation Equipment**  
Code: **none**

### Installation on Weld Plate

**Single Weld Plate**  
Code: **SP**

**Group Weld Plate**  
Code: **RAP**

### Installation on Mounting / Channel Rail

**Mounting Rail Nut**  
Code: **SM** (Carbon Steel)  
Code: **SMG** (Stainless Steel)

**Channel Rail Adaptor**  
Code: **CRA**

## ② Group Size & Diameters

Please select the required group size and diameter and add the corresponding Code to position ② of the order code for your clamp assembly.

Group STAUFF (DIN)	Outside Diameter P / T / H (mm)	Availability of Clamp Body Materials & Designs		Code
		Profiled Design	Type H	
1D (1)	6	●	●	106/06
	6,4	●	●	106,4/06,4
	8	●	●	108/08
	9,5	●	●	109,5/09,5
	10	●	●	110/10
2D (2)	12	●	●	112/12
	12,7	●	●	212,7/12,7
	13,5	●	●	213,5/13,5
	14	●	●	214/14
	15	●	●	215/15
	16	●	●	216/16
3D (3)	17,2	●	●	217,2/17,2
	18	●	●	218/18
	19	●	●	319/19
	20	●	●	320/20
	21,3	●	●	321,3/21,3
4D (4)	22	●	●	322/22
	25	●	●	325/25
	25,4	●	●	325,4/25,4
5D (5)	26,9	●	●	426,9/26,9
	28	●	●	428/28
	30	●	●	430/30
	32	●	●	532/32
	33,7	●	●	533,7/33,7
	35	●	●	535/35
	38	●	●	538/38
40	●	●	540/40	
42	●	●	542/42	

## ③ Clamp Body Design & Material

Please select the design and material of your clamp body and add the corresponding Code to position ③ of the order code for your clamp assembly.

Please check the availability of the selected clamp body design and material according to the matrix table in ②.

### Profiled Design

**Polypropylene**  
Code: **PP**

**Polyamide**  
Code: **PA**

### Type H (Smooth)

**Polypropylene**  
Code: **PPH**

**Polyamide**  
Code: **PAH**

See pages A88 / A89 for material properties and technical information.

Please consult STAUFF for further details on fire-proof clamp body materials, tested and approved according to several international fire-protection standards.

## ④ Mounting & Fitting Combination

Please select the mounting and fitting combination (e.g. Bolts, Cover Plates, etc.) and add the corresponding Code to position ④ of the order code for your clamp assembly.

### Installation with Cover Plate and Bolt

**Cover Plate GD with  
Hexagon Head Bolt AS**  
Code: **GD-AS**

**Cover Plate GD with  
Socket Cap Screw IS**  
Code: **GD-IS**

### Installation with Locking Plate and Bolt

**Safety Locking Plate SI with  
Stacking Bolt AF**  
Code: **SI-AF**

**Safety Locking Plate SIV with  
Stacking Bolt AF**  
Code: **SIV-AF** (for STAUFF Group 1D to 3D only)

● Standard Option

Additional outside diameters and combinations of different outside diameters are available upon request. Please consult STAUFF for further information.

## ⑤ Thread Type

Please select the required thread type and add the corresponding Code to position ⑤ of the order code for your clamp assembly.

**Metric ISO thread**  
Code: **M**

**Unified coarse (UNC) thread**  
Code: **U**

All threaded parts are available with Metric ISO thread or unified coarse (UNC) thread according to dimension table.

## ⑥ Material & Surface Finishing

Please select the required material & surface finishing of the metal parts and add the corresponding Code to position ⑥ of the order code for your clamp assembly.

Metal parts made of Carbon Steel, untreated **W1**

Metal parts made of Carbon Steel, phosphated **W2**

Metal parts made of Carbon Steel, zinc/nickel-plated **W3**

Metal parts made of Stainless Steel V2A  
1.4301 / 1.4305 (AISI 304 / 303) **W4**

Metal parts made of Stainless Steel V4A  
1.4401 / 1.4571 (AISI 316 / 316 Ti) **W5**

Weld Plate made of Carbon Steel, phosphated; Other metal parts made of Carbon Steel, zinc/nickel-plated **W10**

Individual combinations of alternative materials and surface finishings are available upon request. Consult STAUFF for further information.

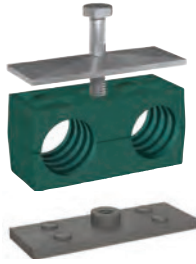
## ⑦ Assembling & Kitting

If required, please select an additional assembling and kitting option and add the corresponding Code to the last position of the order code for your clamp assembly.

**Components supplied separately**  
Code: **none** (standard option)

**Components assembled**  
Code: **#A** (special option)

**Components packed in kits**  
Code: **#K** (special option)



- 1x **Hexagon Head Bolt**  
Surface: W3  
Thread: Metric
- 1x **Cover Plate**  
Surface: W3
- 1x **Clamp Body** (two halves)  
STAUFF Group 1D (DIN 1)  
both O.D. 6 mm / .24 in  
Material: Polypropylene  
Profiled inside surface  
with tension clearance
- 1x **Weld Plate**  
Surface: W2  
Thread: Metric

### Order Code

**SP 106/06 PP GD-AS M W10**

W10 is the standard option for this type of installation.



- 1x **Hexagon Head Bolt**  
Surface: W3  
Thread: Metric
- 1x **Cover Plate**  
Surface: W3
- 1x **Clamp Body** (two halves)  
STAUFF Group 1D (DIN 1)  
both O.D. 6 mm / .24 in  
Material: Polypropylene  
Profiled inside surface  
with tension clearance

### Order Code

**106/06 PP GD-AS M W3**

W3 is the standard option for this type of installation.



- 1x **Stacking Bolt**  
Surface: W3  
Thread: Metric
- 1x **Safety Locking Plate (Type SI)**  
Surface: W3  
Thread: Metric
- 1x **Clamp Body** (two halves)  
STAUFF Group 1D (DIN 1)  
both O.D. 6 mm / .24 in  
Material: Polypropylene  
Profiled inside surface  
with tension clearance

### Order Code

**106/06 PP SI-AF M W3**

W3 is the standard option for this type of installation.



- 1x **Stacking Bolt**  
Surface: W3  
Thread: Metric
- 1x **Safety Locking Plate (Type SIV)**  
Surface: W3  
Thread: Metric
- 1x **Clamp Body** (two halves)  
STAUFF Group 1D (DIN 1)  
both O.D. 6 mm / .24 in  
Material: Polypropylene  
Profiled inside surface  
with tension clearance

### Order Code

**106/06 PP SIV-AF M W3**

W3 is the standard option for this type of installation.  
This type of installation is available up to STAUFF Group 3D only.



- 1x **Hexagon Head Bolt**  
Surface: W3  
Thread: Metric
- 1x **Cover Plate**  
Surface: W3
- 1x **Clamp Body** (two halves)  
STAUFF Group 1D (DIN 1)  
both O.D. 6 mm / .24 in  
Material: Polypropylene  
Profiled inside surface  
with tension clearance
- 1x **Hexagon Rail Nut**  
Surface: W3  
Thread: Metric

### Order Code (Mounting Rail TS not included.)

**SM 106/06 PP GD-AS M W3**

W3 is the standard option for this type of installation.

### Thread Codes

All threaded parts are available with Metric ISO thread or unified coarse (UNC) thread according to dimension table.

Metric ISO thread	<b>M</b>
Unified coarse (UNC) thread	<b>U</b>

### Material Codes

The below listed material codes describe the materials and surface finishings of metal parts that are most relevant for Twin Series clamp assemblies. Individual combinations of alternative materials and surface finishings are available upon request. Consult STAUFF for further information.

Metal parts made of Carbon Steel, untreated	<b>W1</b>
Metal parts made of Carbon Steel, phosphated	<b>W2</b>
Metal parts made of Carbon Steel, zinc/nickel-plated	<b>W3</b>
Metal parts made of Stainless Steel V2A: 1.4301 / 1.4305 (AISI 304 / 303)	<b>W4</b>
Metal parts made of Stainless Steel V4A: 1.4401 / 1.4571 (AISI 316 / 316 Ti)	<b>W5</b>
Weld Plate made of Carbon Steel, phosphated;	
Other metal parts made of Carbon Steel, zinc/nickel-plated	<b>W10</b>